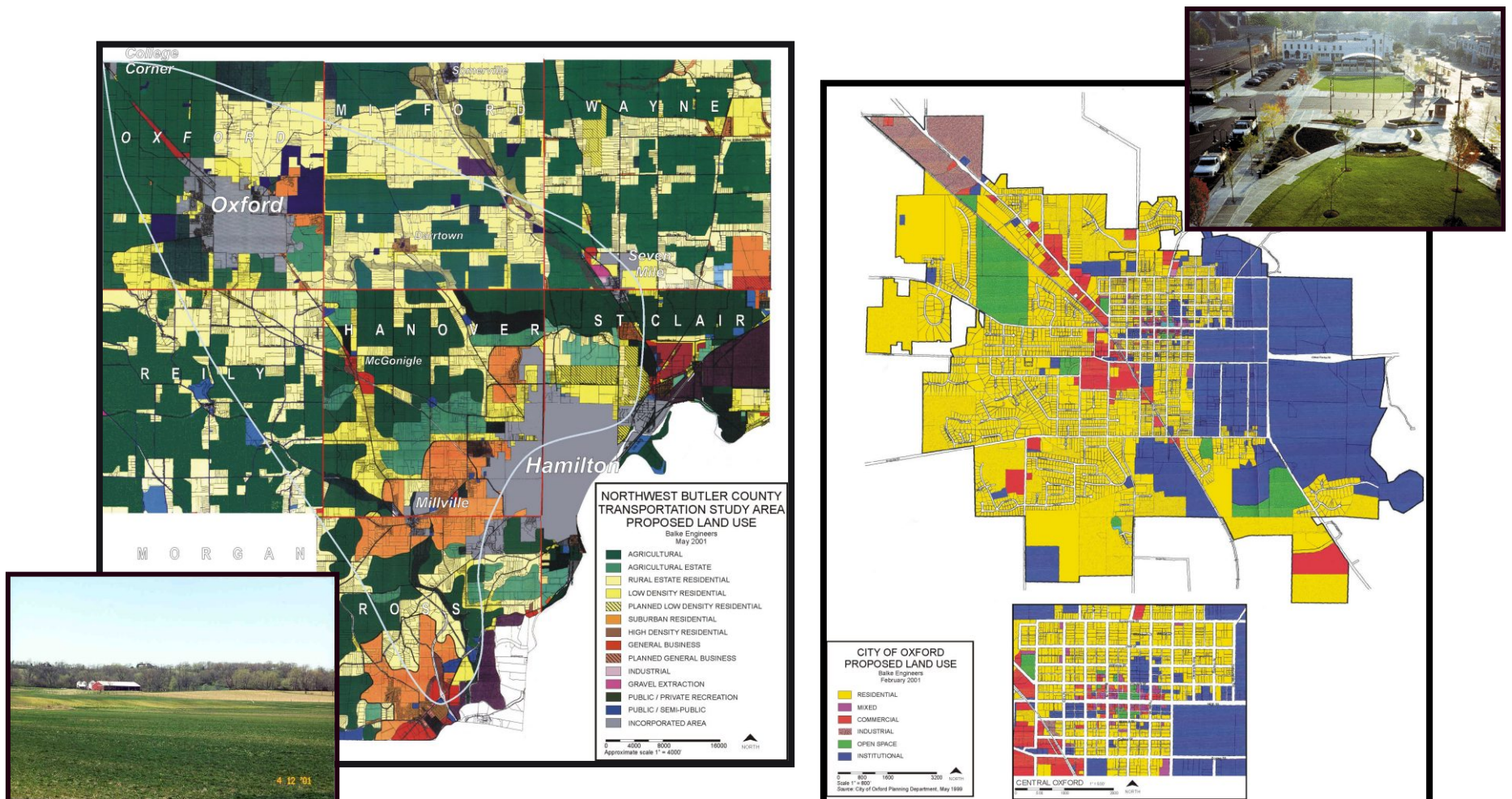


Preserve character of area and ensure improvements are compatible with adopted land use plans

Ensure that recommended transportation solutions are not only compatible with, but support, adopted land use plans of townships and incorporated communities.



Considerations:

- Provide means for growth management and support for adopted township and local long range planning goals,
- Avoid / minimize impact on cultural historic resources, parks, natural resources, farmland, and existing development,
- Preserve small town character of Oxford and rural landscape and character of NBTS area, and
- Support MU and Oxford needs as regional center for area jobs, as well as cultural, educational and entertainment opportunities.