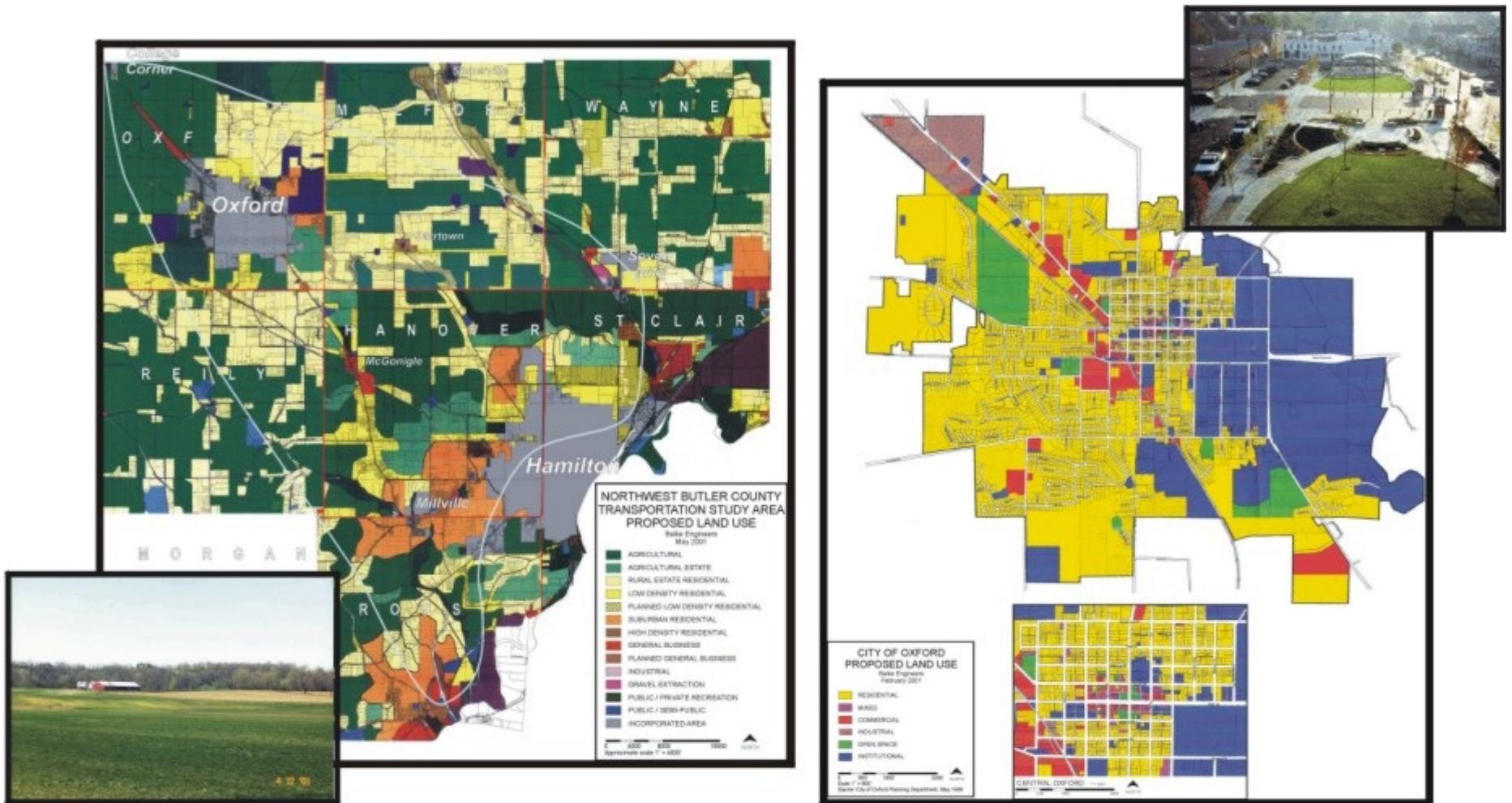


Preserve character of area and ensure improvements are compatible with adopted land use plans

- Ensure that recommended transportation solutions are not only compatible with, but support, adopted land use plans of townships and incorporated communities.



Considerations:

- Provide means for growth management and support for adopted township and local long range planning goals,
- Avoid / minimize impact on cultural historic resources, parks, natural resources, farmland, and existing development,
- Preserve small town character of Oxford and rural landscape and character of NBTS area, and
- Support MU and Oxford needs as regional center for area jobs, as well as cultural, educational and entertainment opportunities.