

BUTLER COUNTY ENGINEERS OFFICE

2019 Snow truck Build

The Goal

- Recycle/ Reuse current equipment
- Extend life of older trucks
- Better control of the process
- accountability of the build
- Save money!

Before & After



New Western Star
Chassis

2002 International
with Muni-Body



New truck with
refurbished Muni-
body

Older truck with new
dump body



Logistics of the build

- ▣ Secure order of new trucks
- ▣ Select older truck for bed exchange
- ▣ After snow & Ice, replace conveyor chains and bearings of old Muni-Bodies
- ▣ Remove old Muni-bodies from International Chassis
- ▣ Remove Liquid tanks
- ▣ Adjust Cab protector for new trucks
- ▣ Weld and repair bed, prep for body shop
- ▣ Send beds for sandblasting and repaint

- ▣ Prep and repair old chassis for sand blast and paint
- ▣ Send painted old truck to Beamer's for new Construction beds
- ▣ Upon delivery of new Trucks install :
 - Hydraulics
 - Lights
 - Bed
 - plow & frame



Removal of Muni-Body from old truck





For safety and to save our new paint job. We created a Bed Sling

Repair and refurbish old beds



Replace conveyor chains and bearings



Adjust cab protector for new Western Star Chassis

Prep and repair old chassis



Replaced valve body box



This box was made
in-house

Before body shop



Muni-Body after sandblasting



After painting



Trucks after paint



New Trucks arrived



▣ Hydraulic system install



Attach hitch plate & bed hinges



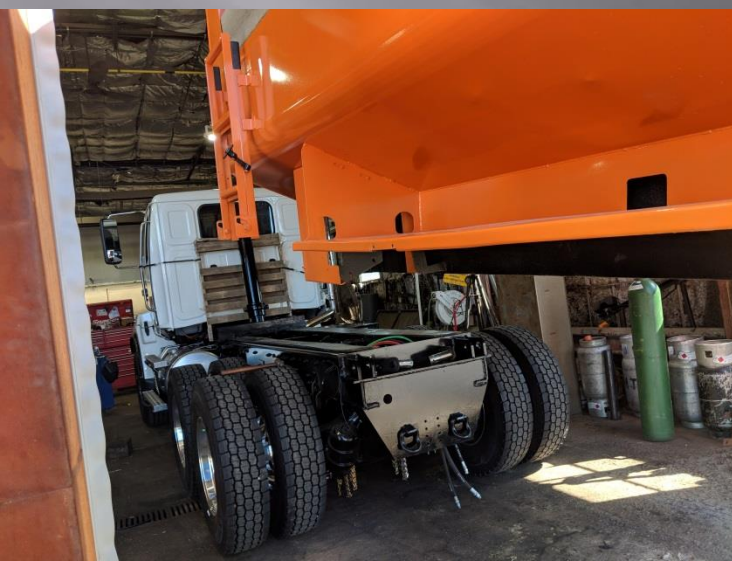
Plow & plow lights



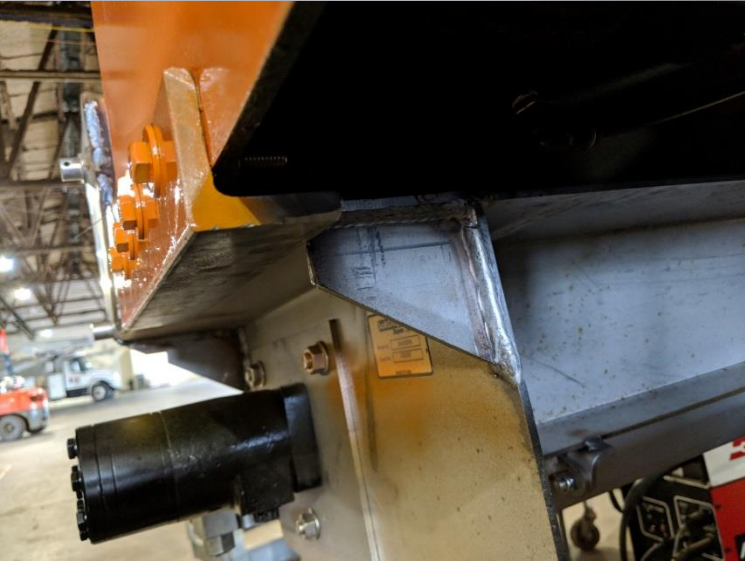
ECCO plow lights



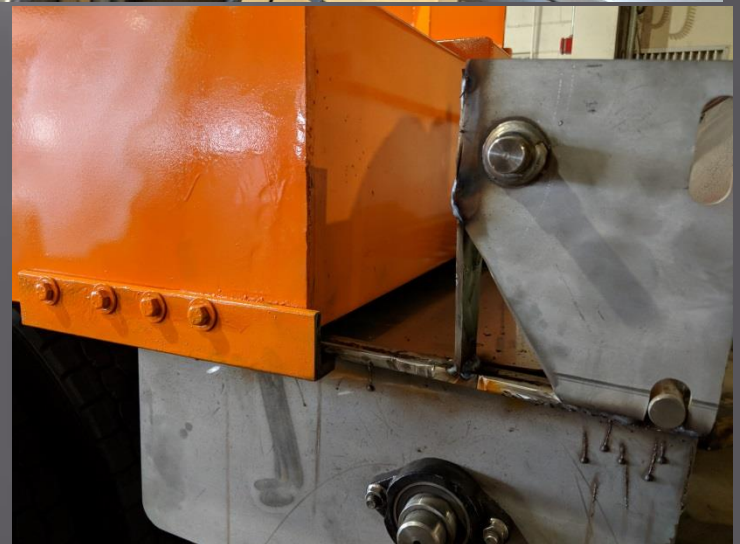
Setting the Bed



Bed Hydraulics



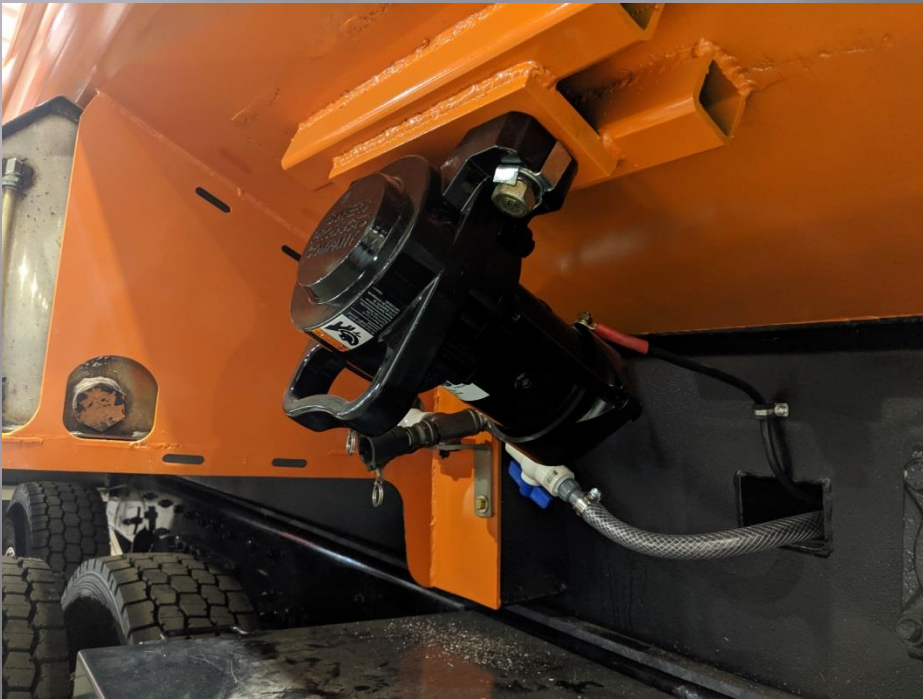
Adding slides to our auger allows us to work on the salt delivery, without having to completely remove it.



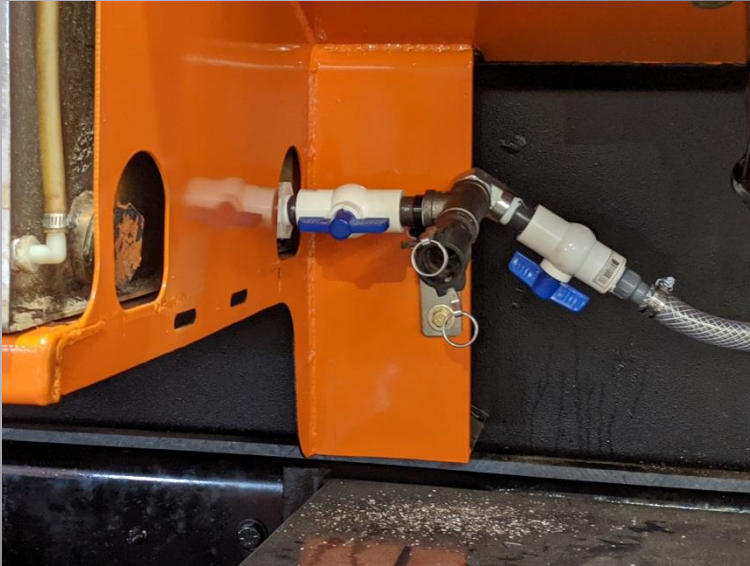
We cut removable pockets for quick disconnects.



Rear camera & Vibrator



Liquids



Liquid system original with bed , with new plumbing and a few tweaks.



To achieve a good slurry mix ,
the salt will be treated as soon as
it comes off the conveyor. Then
mixed by tines attached to
auger, while continually being
treated till it is dropped to
spinner



Last step before mud flaps is
lights



Old trucks get a new life

