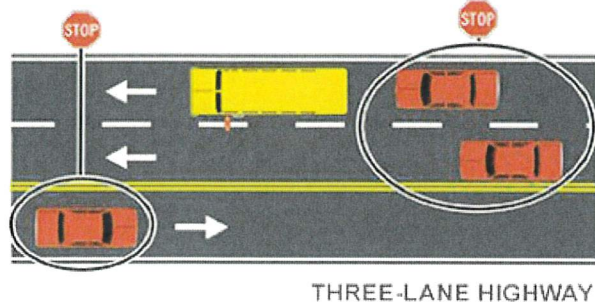
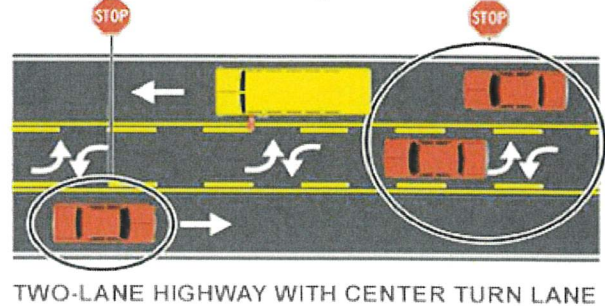
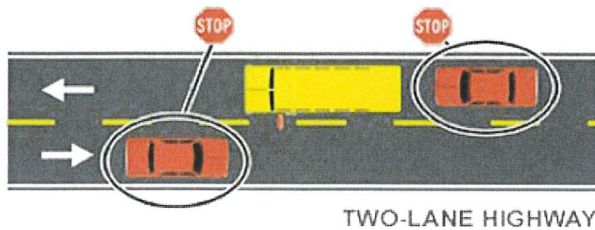
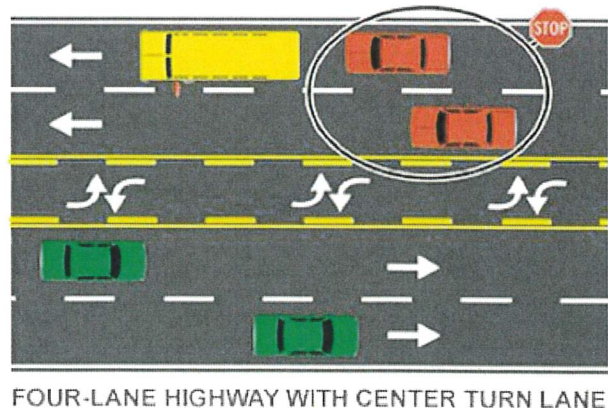
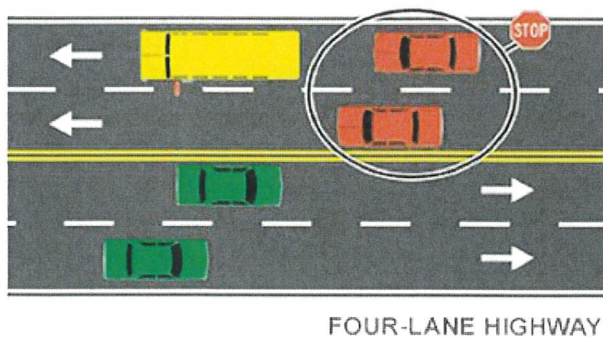


When to stop for a school bus in Ohio

On a road with fewer than four lanes, all traffic approaching a stopped school bus from either direction must stop at least 10 feet from the front or rear of the bus and remain stopped until the bus begins to move or the bus driver signals motorists to proceed.



If the bus is stopped on a street with **four or more lanes**, only traffic proceeding in the same direction as the bus must stop.



Failure to stop for a school bus adds 2 points to your license in Ohio and is punishable by fines up to \$500. You must appear in court and the judge has the discretion to suspend your driver's license for up to one year. A driver who injures a pedestrian while failing to comply with school bus safety laws can face both criminal charges and civil liability. Those liabilities can include the victim's medical expenses, lost wages, rehabilitation, and non-economic damages, such as pain and suffering.