

CONTROL MONUMENT RECORD

DATE: 4/6/99 (Revised 10/99 by GRWAS) **TOWNSHIP:** Morgan

SECTION: 36

TOWN: 3

RANGE: 1

COUNTY: Butler

STATE: Ohio

LOCATION: Beginning at intersection of SR 126 (Cincinnati Brookville Rd) and Morgan Ross Rd, thence south 1.5 km (0.95 mi) to intersection of Morgan Ross Rd and Chesapeake and Ohio rail road line. Monument is west of intersection, marked by survey marker.

Monument No: 1003	State Plane Coordinates: Meters (NAD 83/86) NORTH 147184.589 EAST 409957.150	Latitude and Longitude: (NAD 83/86) LAT N 39° 18' 17.78675" LONG W 84° 42' 13.20436"
Elevation: Meters (NAVD 88) GPS 176.549		

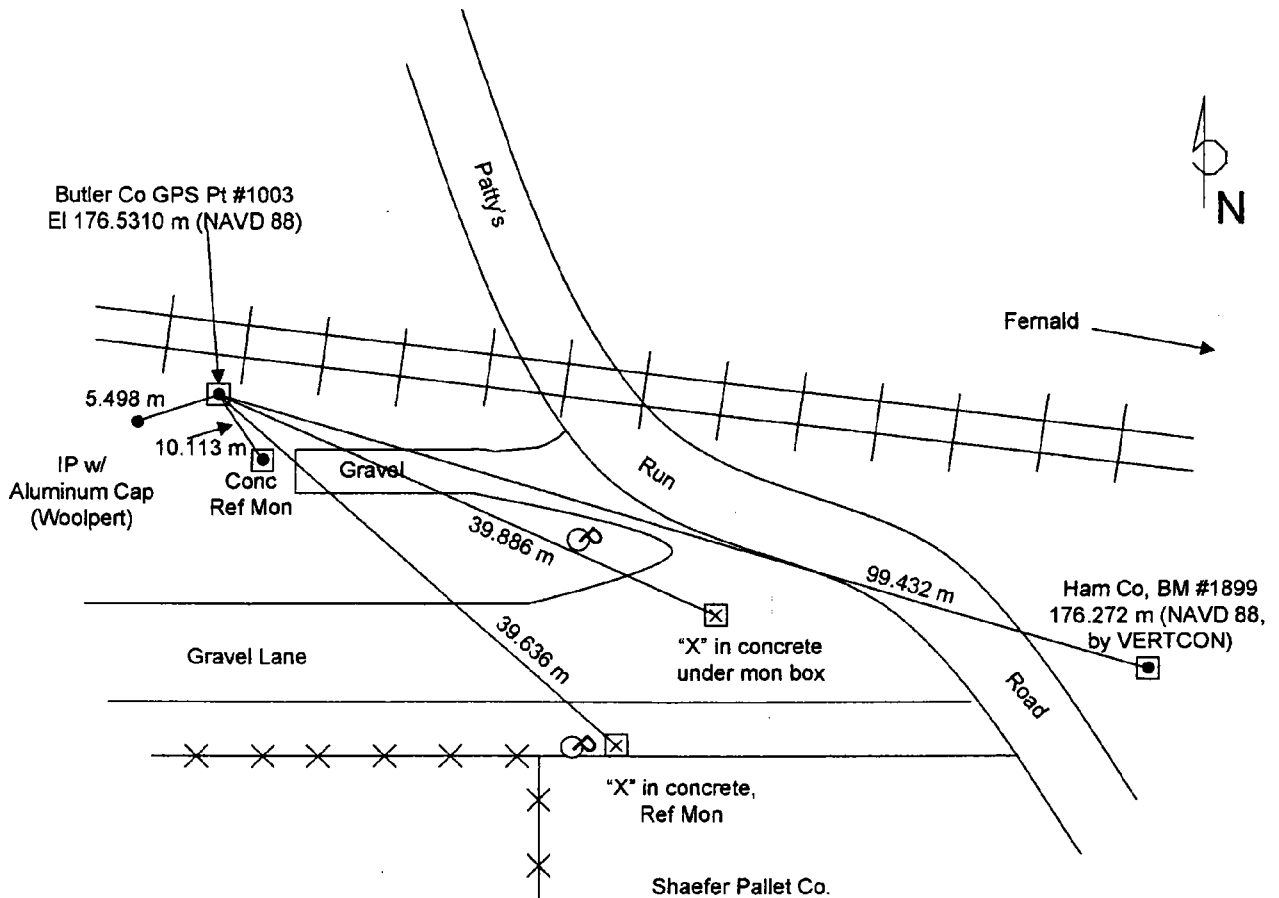
Grid Scale Factor: 0.999936864	Convergence: -1° 23' 53.77316"
---------------------------------------	---------------------------------------

Azimuth to N/A	is N/A	Distance is N/A
-----------------------	---------------	------------------------

MONUMENT DESCRIPTION:

Concrete monument with brass cap marked "Butler County Engineer Reference Monument". Disk marked "1003", "1990" and center punched.

LOCATION SKETCH



DATA BY: A. C. Balph Engr & Surv 1145 California Rd, Okeana, OH 45053 513-756-9111	TYPE OF EQUIPMENT USED: Trimble 4000SE and 4400 GPS receivers with compact dome and compact L1/L2 antennas	SHEET NO. 1
---	--	------------------------------