

CONTROL MONUMENT RECORD

DATE: 4/6/99 (Revised 10/99 by GRWAS) **TOWNSHIP:** Hanover

SECTION: 6

TOWN: 4

RANGE: 2

COUNTY: Butler

STATE: Ohio

LOCATION: Beginning at intersection of US RT 27 and Nichols Rd, thence northeast on Nichols Rd 316 m (1037'), thence northwest 66m (216') to the monument, marked with a survey marker.

| | | |
|--|--|--|
| Monument No: 1011 | State Plane Coordinates: Meters (NAD 83/86) NORTH 165931.848 EAST 410504.972 | Latitude and Longitude: (NAD 83/86) LAT N 39° 28' 25.97164" LONG W 84° 42' 09.43078" |
| Elevation: Meters (NAVD 88) GPS 261.362 | | |

Grid Scale Factor: 0.999937124

Convergence: -1° 23' 51.37875"

Azimuth to N/A

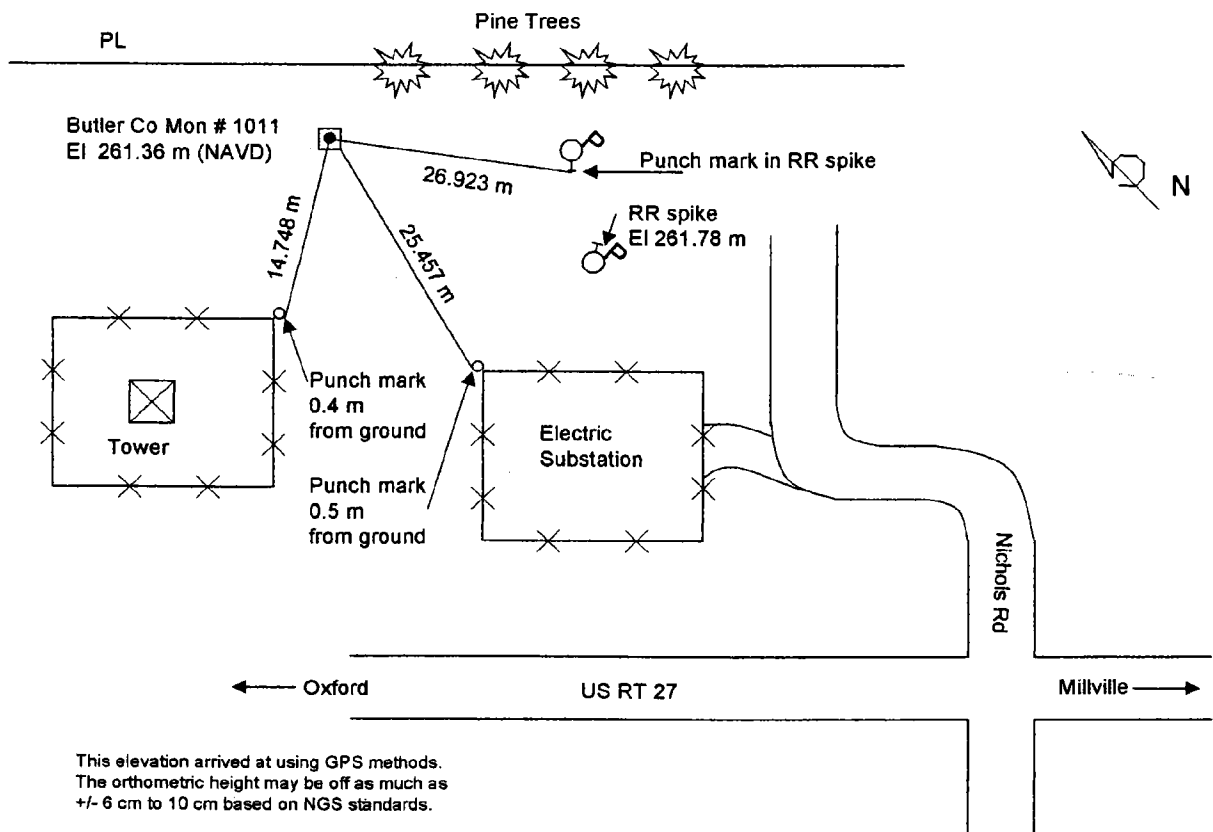
is N/A

Distance is N/A

MONUMENT DESCRIPTION:

Concrete monument with brass cap marked "Butler County Engineer Reference Monument". Disk marked "1011", and punch mark in center.

LOCATION SKETCH



This elevation arrived at using GPS methods.
The orthometric height may be off as much as
+/- 6 cm to 10 cm based on NGS standards.

| | | |
|---|---|------------------------------|
| DATA BY: A. C. Balph Engr & Surv 1145 California Rd, Okeana, OH 45053 513-756-9111 | TYPE OF EQUIPMENT USED: Trimble 4000SE and 4400 GPS receivers with compact dome and compact L1/L2 antennas | SHEET NO. 5 |
|---|---|------------------------------|