

CONTROL MONUMENT RECORD

DATE: 4/6/99 (Revised 10/99 by GRWAS) **TOWNSHIP:** Oxford

SECTION: 6

TOWN: 5

RANGE: 1

COUNTY: Butler

STATE: Ohio

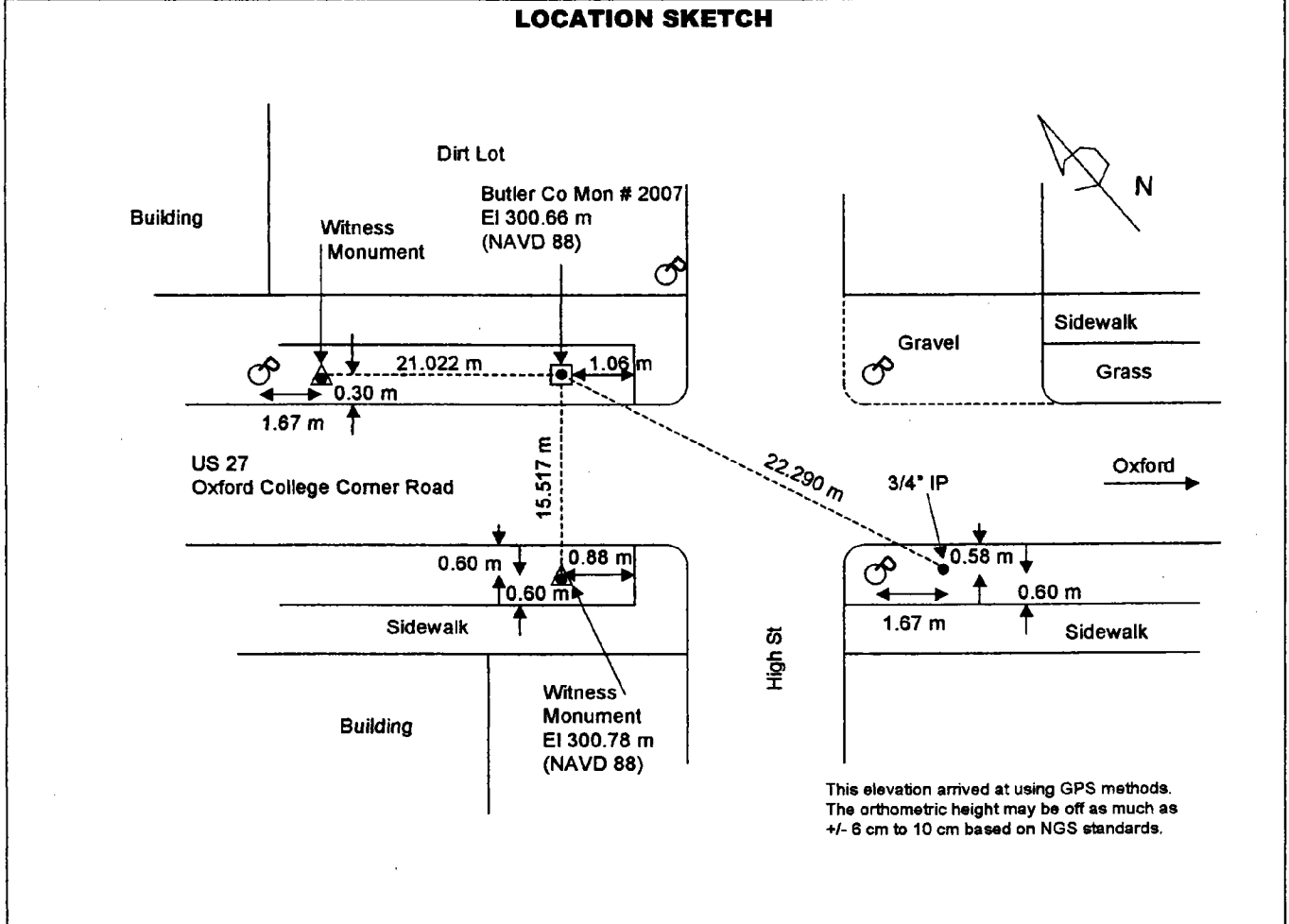
LOCATION: Intersection of US RT 27 and High Street, College Corner. Monument is located in grass between sidewalk and street, north corner of intersection.

Monument No: 2007	State Plane Coordinates: Meters (NAD 83/86) NORTH 176521.948 EAST 401158.462	Latitude and Longitude: (NAD 83/86) LAT N 39° 34' 01.68962" LONG W 84° 48' 51.72447"
Elevation: Meters (NAVD 88) GPS 300.674		

Grid Scale Factor: 0.999940980	Convergence: -1° 28' 06.64195"
---------------------------------------	---------------------------------------

Azimuth to N/A	is N/A	Distance is N/A
-----------------------	---------------	------------------------

MONUMENT DESCRIPTION:
Concrete Monument with Brass Cap marked "BUTLER COUNTY ENGINEER REF. MONUMENT"
"CONTROL 2007", punch mark in center.



DATA BY: A. C. Balph Engr & Surv 1145 California Rd, Okeana, OH 45053 513-756-9111	TYPE OF EQUIPMENT USED: Trimble 4000SE and 4400 GPS receivers with compact dome and compact L1/L2 antennas	SHEET NO. 4
---	---	------------------------------