

CONTROL MONUMENT RECORD

DATE: 4/6/99 (Revised 10/99 by GRWAS) **TOWNSHIP:** Milford

SECTION: 6

TOWN: 5

RANGE: 2

COUNTY: Butler

STATE: Ohio

LOCATION: Intersection of Somerville Rd and St Rt 177, thence north to Butler County / Preble County Line. Monument is located south of county line, on west side of Rt 177.

Monument No: 2009	State Plane Coordinates: Meters (NAD 83/86) NORTH 176283.592 EAST 411105.173	Latitude and Longitude: (NAD 83/86) LAT N 39° 34' 02.02208" LONG W 84° 41' 54.87002"
Elevation: Meters (NAVD 88) GPS 297.421		

Grid Scale Factor: 0.999940985

Convergence: -1° 23' 42.13966"

Azimuth to N/A

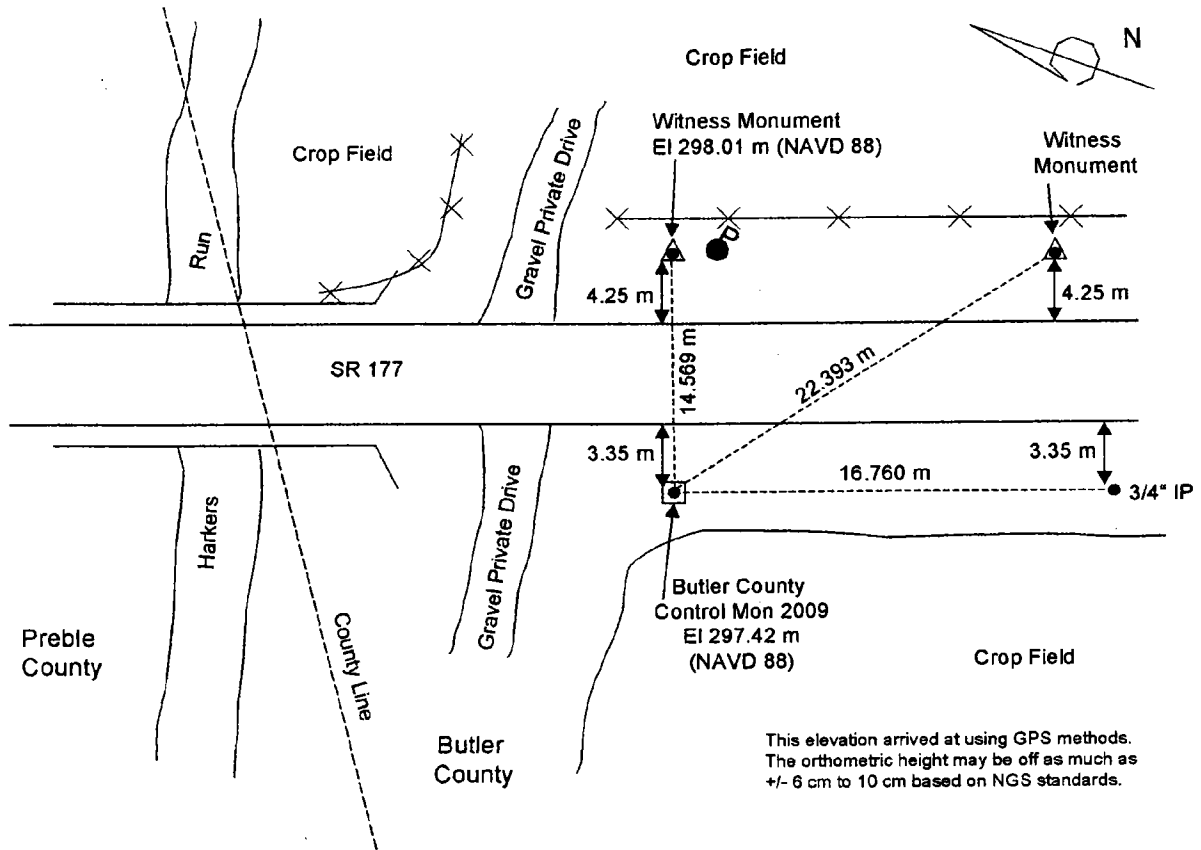
is N/A

Distance is N/A

MONUMENT DESCRIPTION:

Concrete monument with brass cap marked "Butler County Engineer Ref. Monument", "2009", with punch mark in center.

LOCATION SKETCH



DATA BY:
A. C. Balph Engr & Surv
1145 California Rd, Okeana,
OH 45053
513-756-9111

TYPE OF EQUIPMENT USED:
Trimble 4000SE and 4400 GPS receivers with compact dome and compact L1/L2 antennas

SHEET NO.
3