

CONTROL MONUMENT RECORD

DATE: 4/8/99 (Revised 10/99 by GRWAS) **TOWNSHIP:** Milford

SECTION: 1

TOWN: 5 **RANGE:** 2 **COUNTY:** Butler

STATE: Ohio

LOCATION: Wayne Trace Road, south of Butler County / Preble County line.

Monument No: 2011	State Plane Coordinates: Meters (NAD 83/86) NORTH 176009.109 EAST 420784.170	Latitude and Longitude: (NAD 83/86) LAT N 39° 34' 00.56929" LONG W 84° 35' 09.19349"
Elevation: Meters (NAVD 88) GPS 299.636		

Grid Scale Factor: 0.999940962

Convergence: -1° 19' 24.72997"

Azimuth to N/A

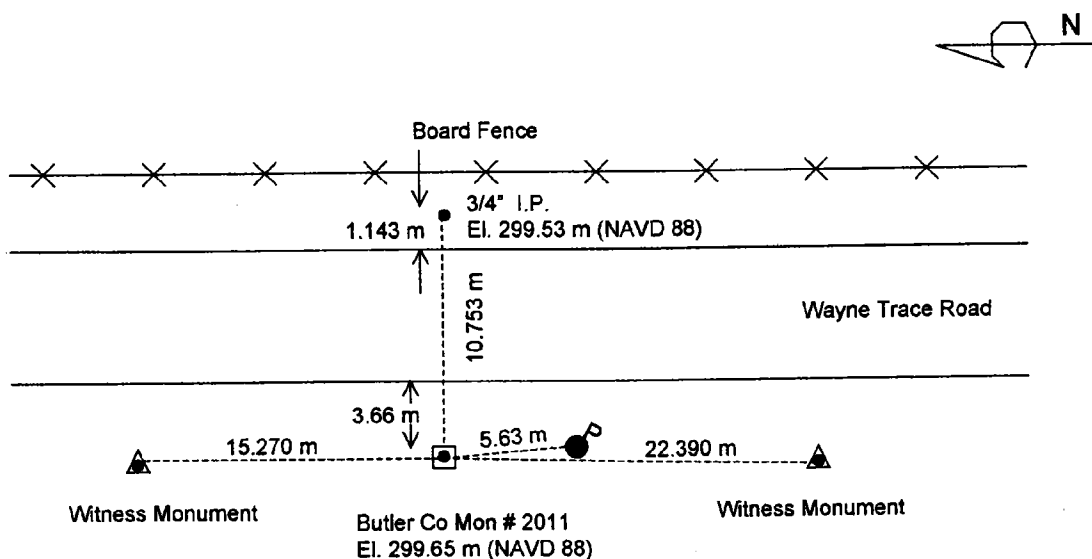
is N/A

Distance is N/A

MONUMENT DESCRIPTION:

Concrete monument with brass disk marked "BUTLER COUNTY ENGINEER REF. MONUMENT", "2011" with center punch mark.

LOCATION SKETCH



Crop Field

This elevation arrived at using GPS methods.
The orthometric height may be off as much as
+/- 6 cm to 10 cm based on NGS standards.

DATA BY: A. C. Balph Engr & Surv 1145 California Rd, Okeana, OH 45053 513-756-9111	TYPE OF EQUIPMENT USED: Trimble 4000SE and 4400 GPS receivers with compact dome and compact L1/L2 antennas	SHEET NO. 7
---	---	------------------------------