

CONTROL MONUMENT RECORD

DATE: 4/6/99 (Revised 10/99 by GRWAS) **TOWNSHIP:** Reily

SECTION: 15

TOWN: 4

RANGE: 1

COUNTY: Butler

STATE: Ohio

LOCATION: Intersection of Stillwell Road and ST RT 732 in Reily, thence east on Stillwell Road to house #6011.

Monument No: 99FC04	State Plane Coordinates: Meters (NAD 83/86) NORTH 161715.004 EAST 405890.276	Latitude and Longitude: (NAD /8683) LAT N 39° 26' 05.57862" LONG W 84° 45' 18.04795"
Elevation: Meters (NAVD 88) GPS 252.380		

Grid Scale Factor: 0.999936295

Convergence: -1° 25' 51.06003"

Azimuth to 99FC05

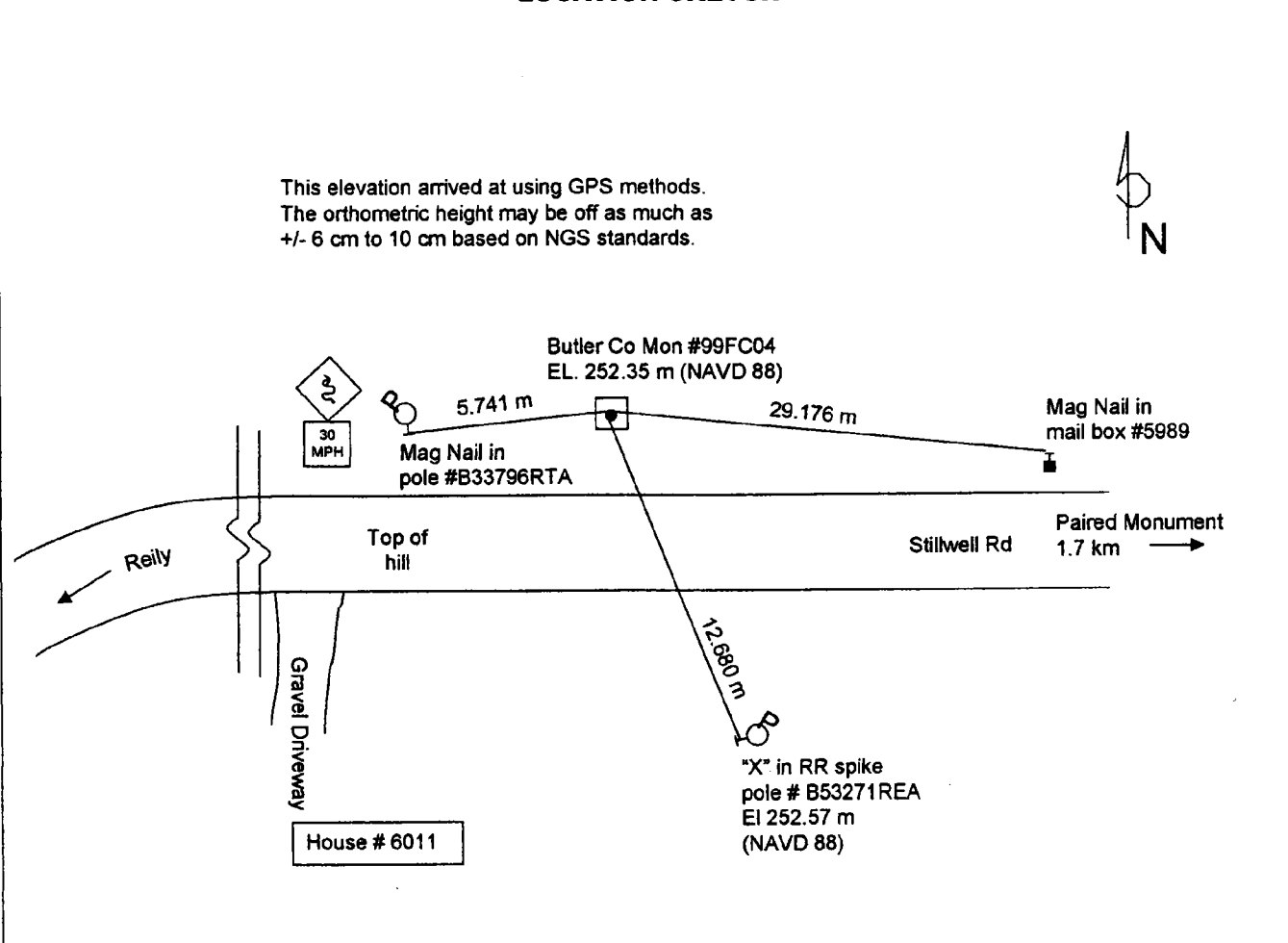
is 91° 34' 10" (grid)

Distance is 1704.335 m

MONUMENT DESCRIPTION:

Butler County monument – ½" x 30" rebar in monument (not necessarily centered). Butler County brass disk marked "99FC04", with center punch mark.

LOCATION SKETCH



DATA BY:
A. C. Balph Engr & Surv
1145 California Rd, Okeana,
OH 45053
513-756-9111

TYPE OF EQUIPMENT USED:
Trimble 4000SE and 4400 GPS receivers with compact dome and
compact L1/L2 antennas

**SHEET
NO.
16**