

CONTROL MONUMENT RECORD

DATE: 3/2/99

TOWNSHIP: UNION

SECTION: 30

TOWN: 3

RANGE: 2

COUNTY: BUTLER

STATE: OHIO

LOCATION: Monument is on the east side of Lesourdsville Road, 0.20 mi. north of the intersection of Tylersville Road.

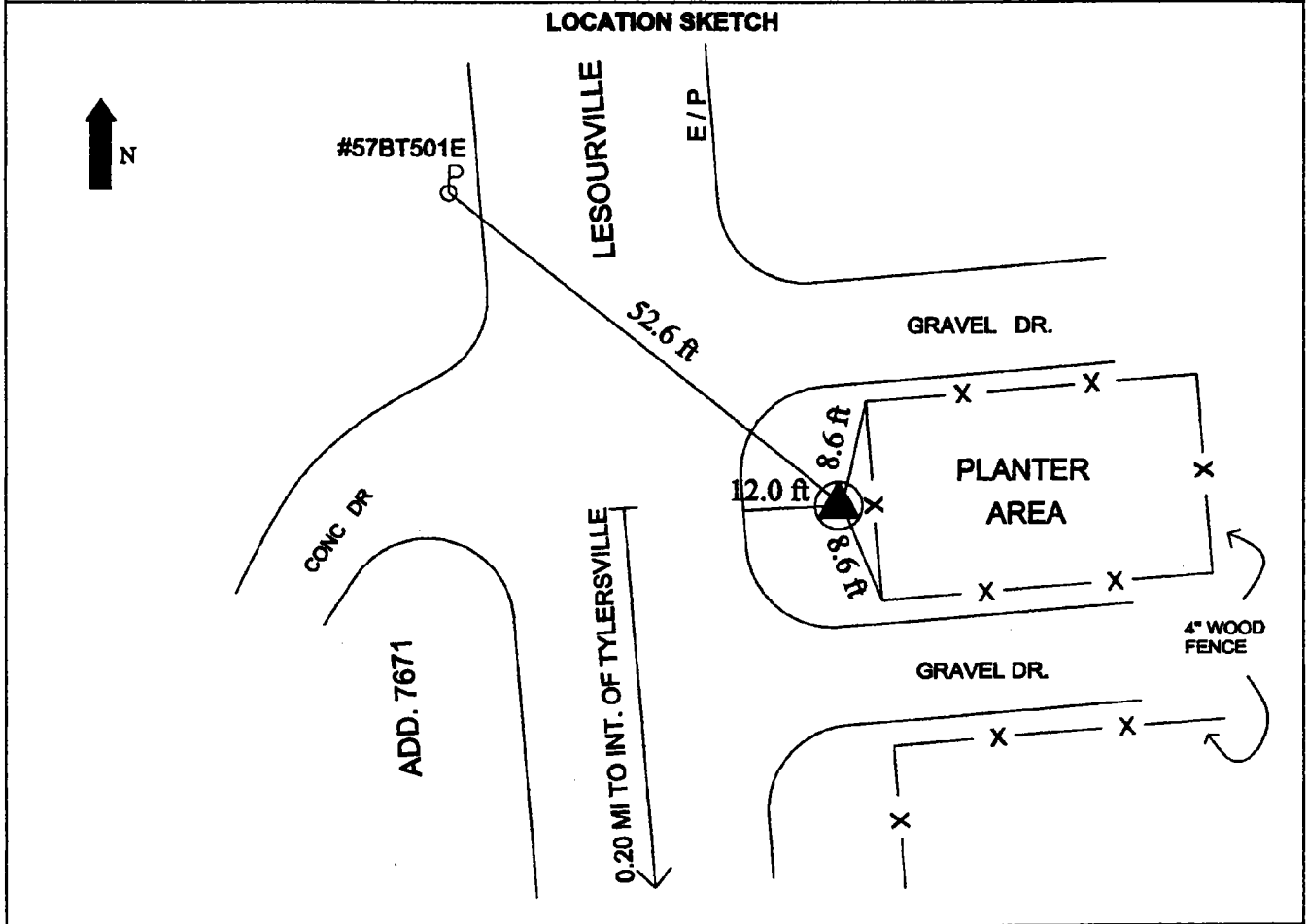
Monument No: 99FC53A	State Plane Coordinates: Meters (NAD 83/88)	Latitude and Longitude: (NAD 83/88)
Elevation: Meters (NAVD 88) GPS 249.287	NORTH 152855.822 EAST 434395.575	LAT 39° 21' 39.74819" LONG 84° 25' 18.40782"

Grid Scale Factor: 0.999935990	Convergence: -1° 13' 09.86493"
---------------------------------------	---------------------------------------

Azimuth to 99FC53	is 173° 26' 26" (grid)	Distance is 368.023 m
--------------------------	-------------------------------	------------------------------

MONUMENT DESCRIPTION:

Butler County Monument -1/2" x 30" rebar in monument (not necessarily centered). Butler County disk marked "99FC53A", with center punch mark.



DATA BY: GRW AERIAL SURVEYS 801 CORPORATE DR. LEXINGTON, KY 40503 606-223-3999	TYPE OF EQUIPMENT USED: Trimble 4000SSI dual frequency receivers with compact L1/L2 antennae with ground plane	SHEET NO. 37
---	--	-----------------------------------