

CONTROL MONUMENT RECORD

DATE: 3 / 10 / 99

TOWNSHIP: FAIRFIELD

SECTION: 21

TOWN: 2

RANGE: 2

COUNTY: BUTLER

STATE: OHIO

LOCATION: Monument is on the north side of S.R. 4, across from Ladders Marine, 1/3 mile northwest of the intersection of Ross Rd.

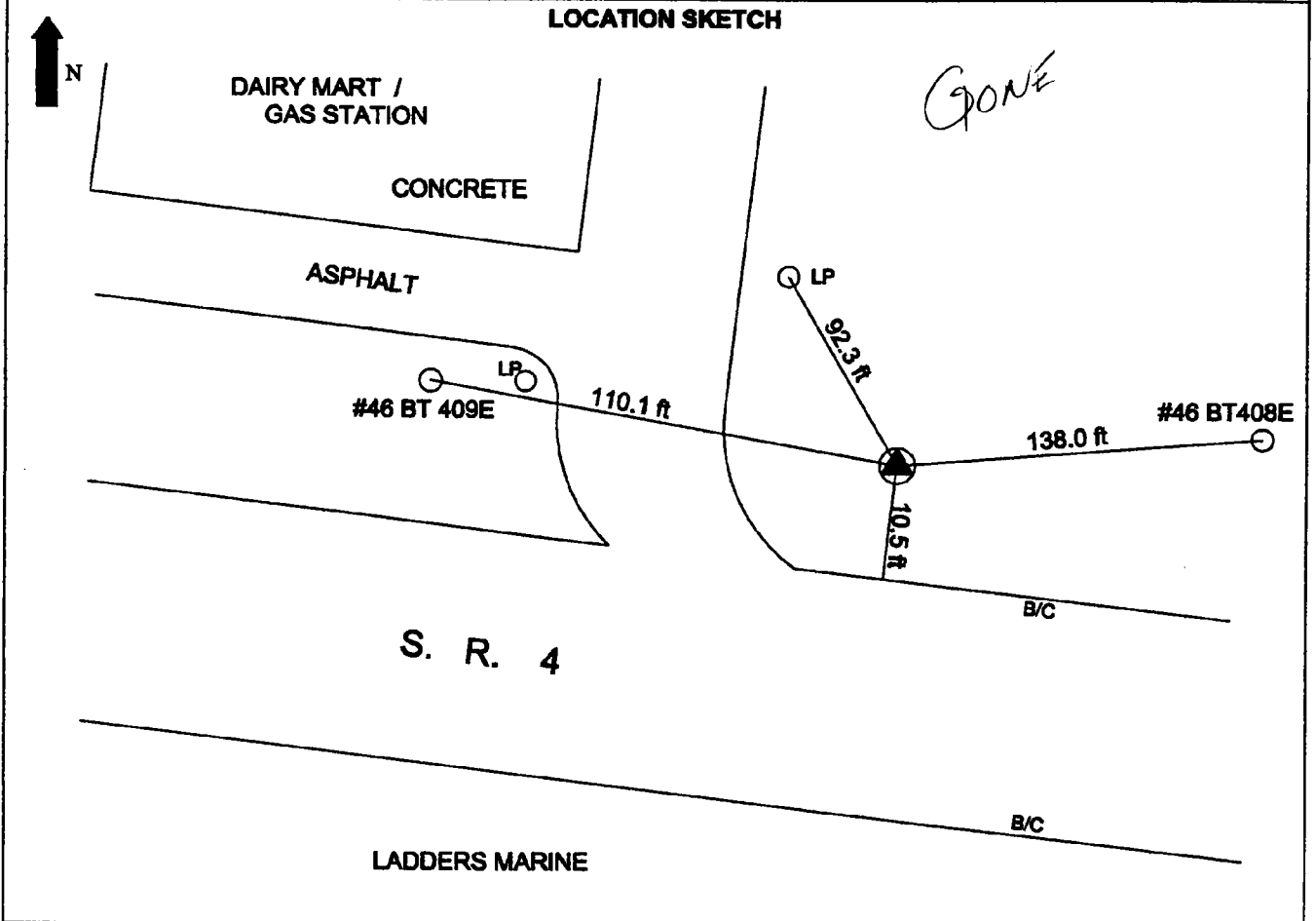
Monument No: 99FC54A	State Plane Coordinates: Meters (NAD 83/86) NORTH 149145.078 EAST 426744.043	Latitude and Longitude: (NAD 83/86) LAT 39° 19' 34.04350" LONG 84° 30' 34.51090"
Elevation: Meters (NAVD 88) GPS 216.151		

Grid Scale Factor: 0.999936422	Convergence: -1° 16' 30.43851"
---------------------------------------	---------------------------------------

Azimuth to 99FC54	is 131° 26' 37" (grid)	Distance is 549.523 m
--------------------------	-------------------------------	------------------------------

MONUMENT DESCRIPTION:

Butler County Monument -1/2" x 30" rebar in monument (not necessarily centered). Butler County disk marked "99FC54A", with center punch mark.



DATA BY: GRW AERIAL SURVEYS 801 CORPORATE DR. LEXINGTON, KY 40503 606-223-3999	TYPE OF EQUIPMENT USED: Trimble 4000SSI dual frequency receivers with compact L1/L2 antennae with ground plane	SHEET NO. 39
---	--	-----------------------------------