

CONTROL MONUMENT RECORD

DATE: 4/12/99 (Revised 10/99 by GRWAS) **TOWNSHIP:** Morgan

SECTION: 6

TOWN: 3

RANGE: 1

COUNTY: Butler

STATE: Ohio

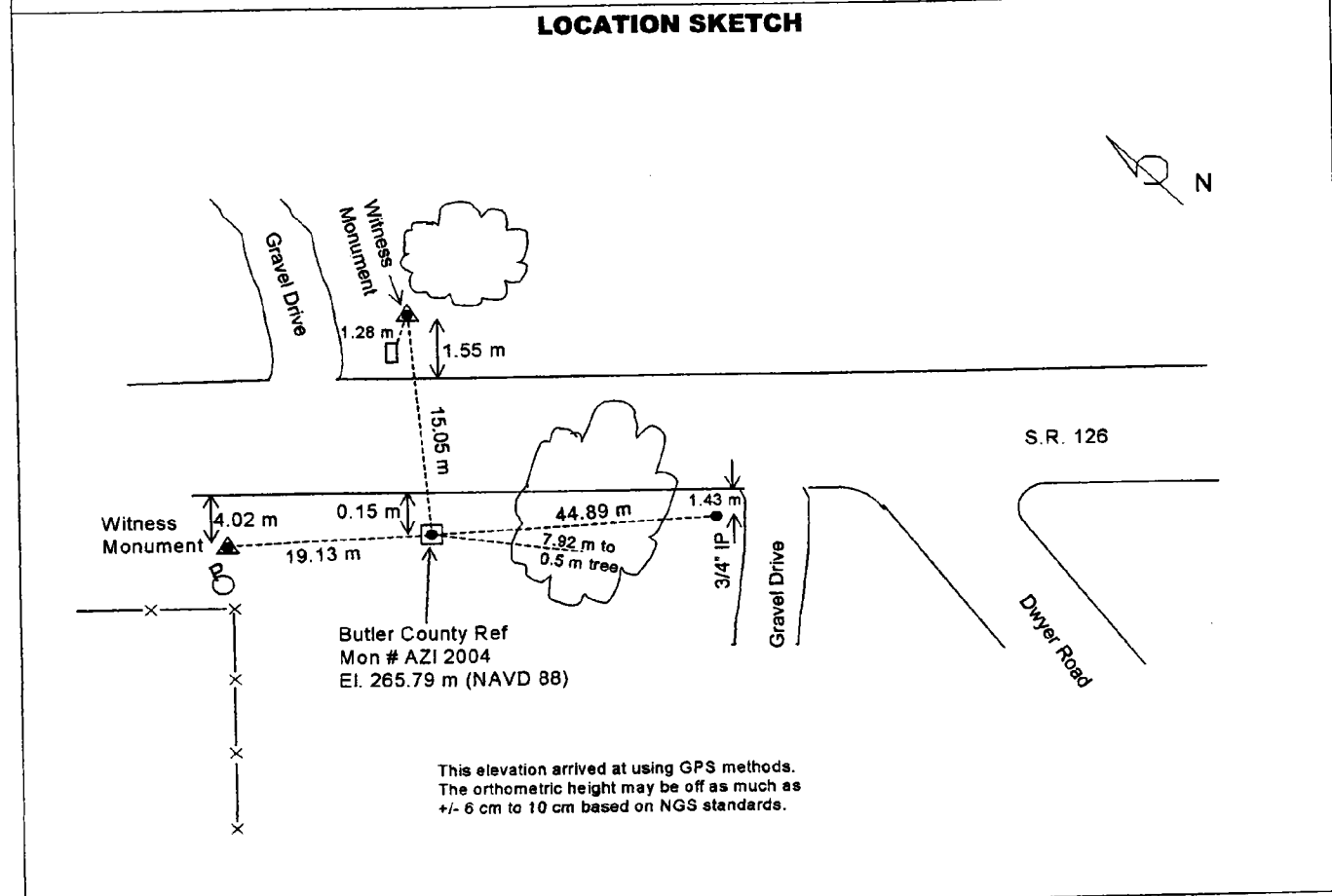
LOCATION: Intersection of SR 126 and Dwyer Road, thence northwest on SR 126. Monument is located on west side of SR 126.

Monument No: AZI 2004	State Plane Coordinates: Meters (NAD 83/86) NORTH 156904.022 EAST 400580.958	Latitude and Longitude: (NAD 83/86) LAT N 39° 23' 25.26306" LONG W 84° 48' 54.84023"
Elevation: Meters (NAVD 88) GPS 265.827		

Grid Scale Factor: 0.999935913 **Convergence:** -1° 28' 08.61896"

Azimuth to 2003 is 314° 46' 40" (grid) **Distance is** 238.539 m

MONUMENT DESCRIPTION:
Concrete monument with brass cap marked "BUTLER COUNTY REF. MONUMENT", "AZI 2004".



DATA BY: A. C. Balph Engr & Surv 1145 California Rd, Okeana, OH 45053 513-756-9111	TYPE OF EQUIPMENT USED: Trimble 4000SE and 4400 GPS receivers with compact dome and compact L1/L2 antennas	SHEET NO. 31
---	---	-----------------------------