

CONTROL MONUMENT RECORD

DATE: 4/6/99 (Revised 10/99 by GRWAS) **TOWNSHIP:** Reily

SECTION: 31

TOWN: 4

RANGE: 1

COUNTY: Butler

STATE: Ohio

LOCATION: Beginning at intersection of SR 129 (Hamilton Scipio Rd) and SR 126 (Cincinnati-Brookville Rd). Monument is north of intersection, approximately 3m (10') off of north edge of pavement of SR 129.

Monument No: 2003	State Plane Coordinates: Meters (NAD 83/86)	Latitude and Longitude: (NAD 83/86)
Elevation: Meters (NAVD 88) GPS 255.967	NORTH 157072.039	LAT N 39° 23' 30.56886"
	EAST 400411.632	LONG W 84° 49' 02.09436"

Grid Scale Factor: 0.999935916

Convergence: -1° 28' 13.22185"

Azimuth to AZI 2004

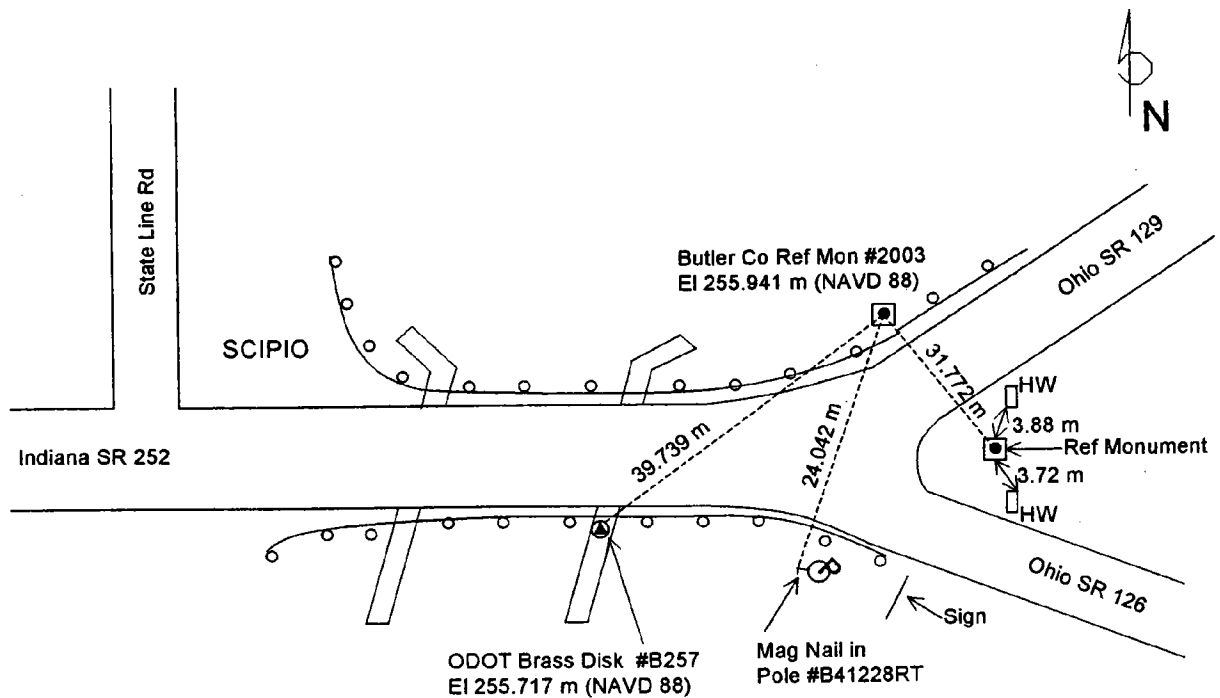
is 134° 46' 40" (grid)

Distance is 238.539 m

MONUMENT DESCRIPTION:

Concrete monument with brass cap marked "Butler County Engineer Reference Monument". Disk marked "2003".

LOCATION SKETCH



DATA BY: A. C. Balph Engr & Surv 1145 California Rd, Okeana, OH 45053 513-756-9111	TYPE OF EQUIPMENT USED: Trimble 4000SE and 4400 GPS receivers with compact dome and compact L1/L2 antennas	SHEET NO. 6
---	---	------------------------------