

# CONTROL MONUMENT RECORD

**DATE:** 4/6/99 (Revised 10/99 by GRWAS) **TOWNSHIP:** Oxford

**SECTION:** 6

**TOWN:** 5

**RANGE:** 1

**COUNTY:** Butler

**STATE:** Ohio

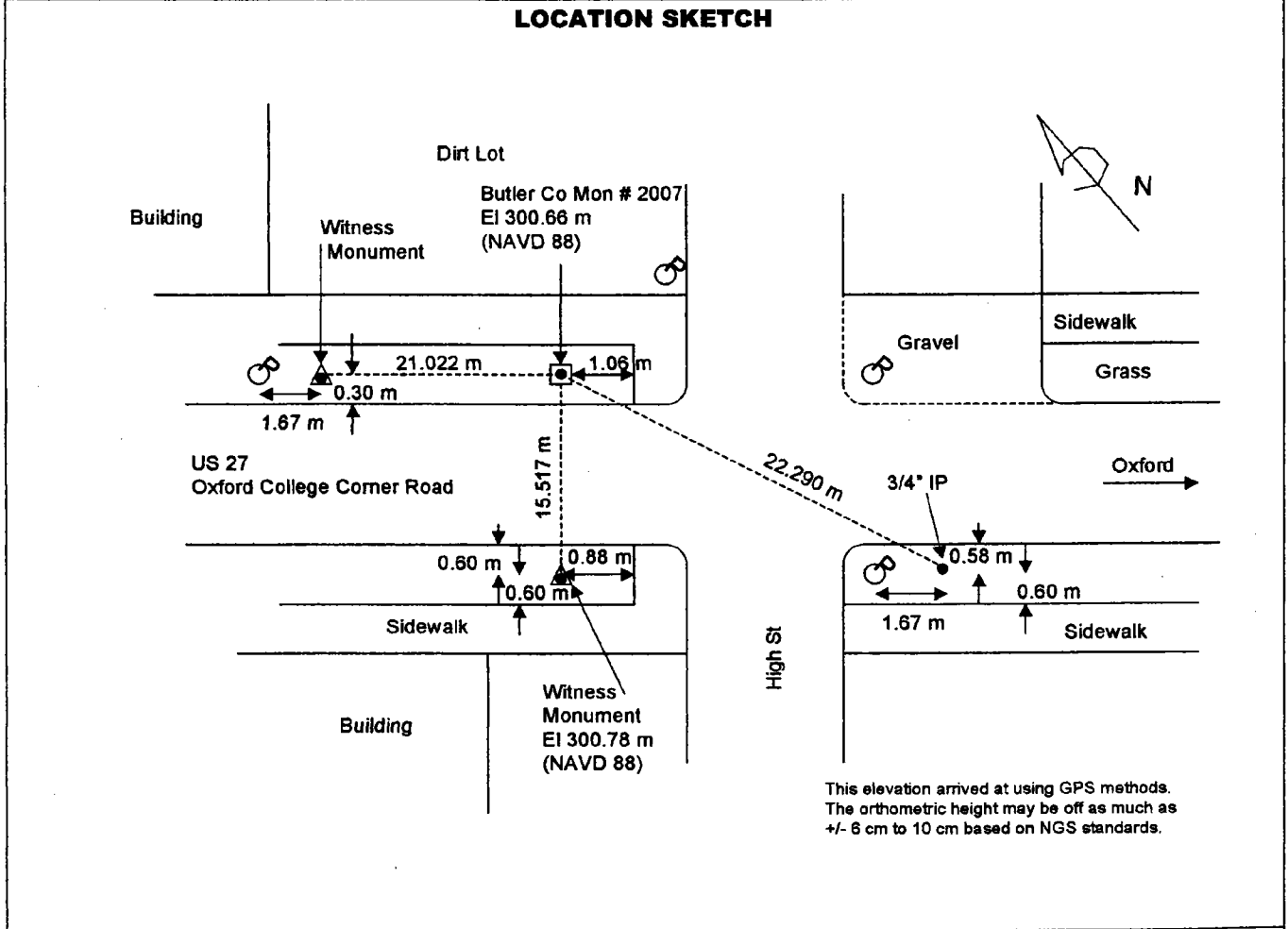
**LOCATION:** Intersection of US RT 27 and High Street, College Corner. Monument is located in grass between sidewalk and street, north corner of intersection.

<b>Monument No:</b> 2007	<b>State Plane Coordinates:</b> Meters (NAD 83/86) NORTH 176521.948 EAST 401158.462	<b>Latitude and Longitude:</b> (NAD 83/86) LAT N 39° 34' 01.68962" LONG W 84° 48' 51.72447"
<b>Elevation:</b> Meters (NAVD 88) GPS 300.674		

<b>Grid Scale Factor:</b> 0.999940980	<b>Convergence:</b> -1° 28' 06.64195"
---------------------------------------	---------------------------------------

<b>Azimuth to</b> N/A	<b>is</b> N/A	<b>Distance is</b> N/A
-----------------------	---------------	------------------------

**MONUMENT DESCRIPTION:**  
Concrete Monument with Brass Cap marked "BUTLER COUNTY ENGINEER REF. MONUMENT"  
"CONTROL 2007", punch mark in center.



<b>DATA BY:</b> A. C. Balph Engr & Surv 1145 California Rd, Okeana, OH 45053 513-756-9111	<b>TYPE OF EQUIPMENT USED:</b> Trimble 4000SE and 4400 GPS receivers with compact dome and compact L1/L2 antennas	<b>SHEET NO.</b> <b>4</b>
---	---	------------------------------