

CONTROL MONUMENT RECORD

DATE: 4/6/99 (Revised 10/99 by GRWAS) **TOWNSHIP:** Reily

SECTION: 14

TOWN: 4

RANGE: 1

COUNTY: Butler

STATE: Ohio

LOCATION: Intersection of ST RT 732 and Stillwell Road, Reily. Thence east on Stillwell Road to House #5409, monument is on the north side of Stillwell Road.

Monument No: 99FC05	State Plane Coordinates: Meters (NAD 83/86) NORTH 161668.324 EAST 407593.973	Latitude and Longitude: (NAD 83/86) LAT N 39° 26' 05.43887" LONG W 84° 44' 06.77697"
Elevation: Meters (NAVD 88) GPS 257.980		

Grid Scale Factor: 0.999936294

Convergence: -1° 25' 05.83719"

Azimuth to 99FC04

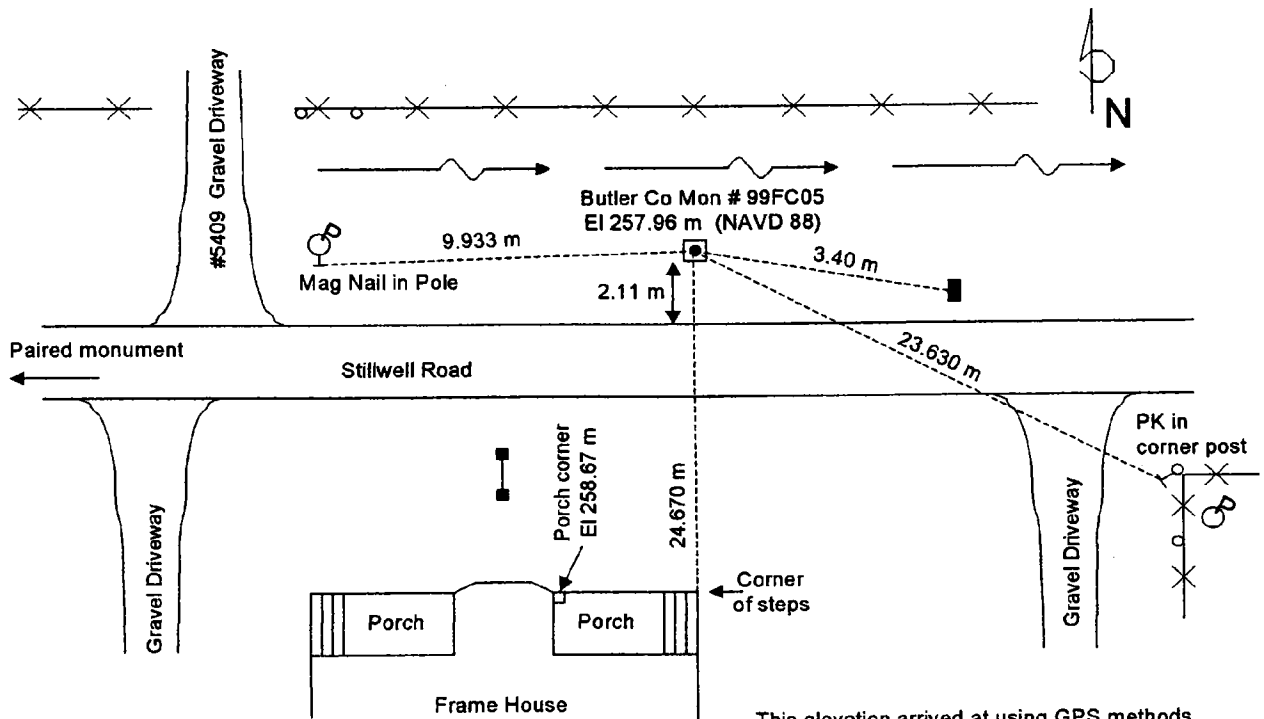
is 271° 34' 10" (grid)

Distance is 1704.335 m

MONUMENT DESCRIPTION:

Butler County monument – ½" x 30" rebar in monument (not necessarily centered). Butler County brass disk marked "99FC05", with center punch mark.

LOCATION SKETCH



This elevation arrived at using GPS methods. The orthometric height may be off as much as +/- 6 cm to 10 cm based on NGS standards.

DATA BY: A. C. Balph Engr & Surv 1145 California Rd, Okeana, OH 45053 513-756-9111	TYPE OF EQUIPMENT USED: Trimble 4000SE and 4400 GPS receivers with compact dome and compact L1/L2 antennas	SHEET NO. 17
---	--	-------------------------------