

CONTROL MONUMENT RECORD

DATE: 3/11/99

TOWNSHIP: UNION

SECTION: 9

TOWN: 3

RANGE: 2

COUNTY: BUTLER

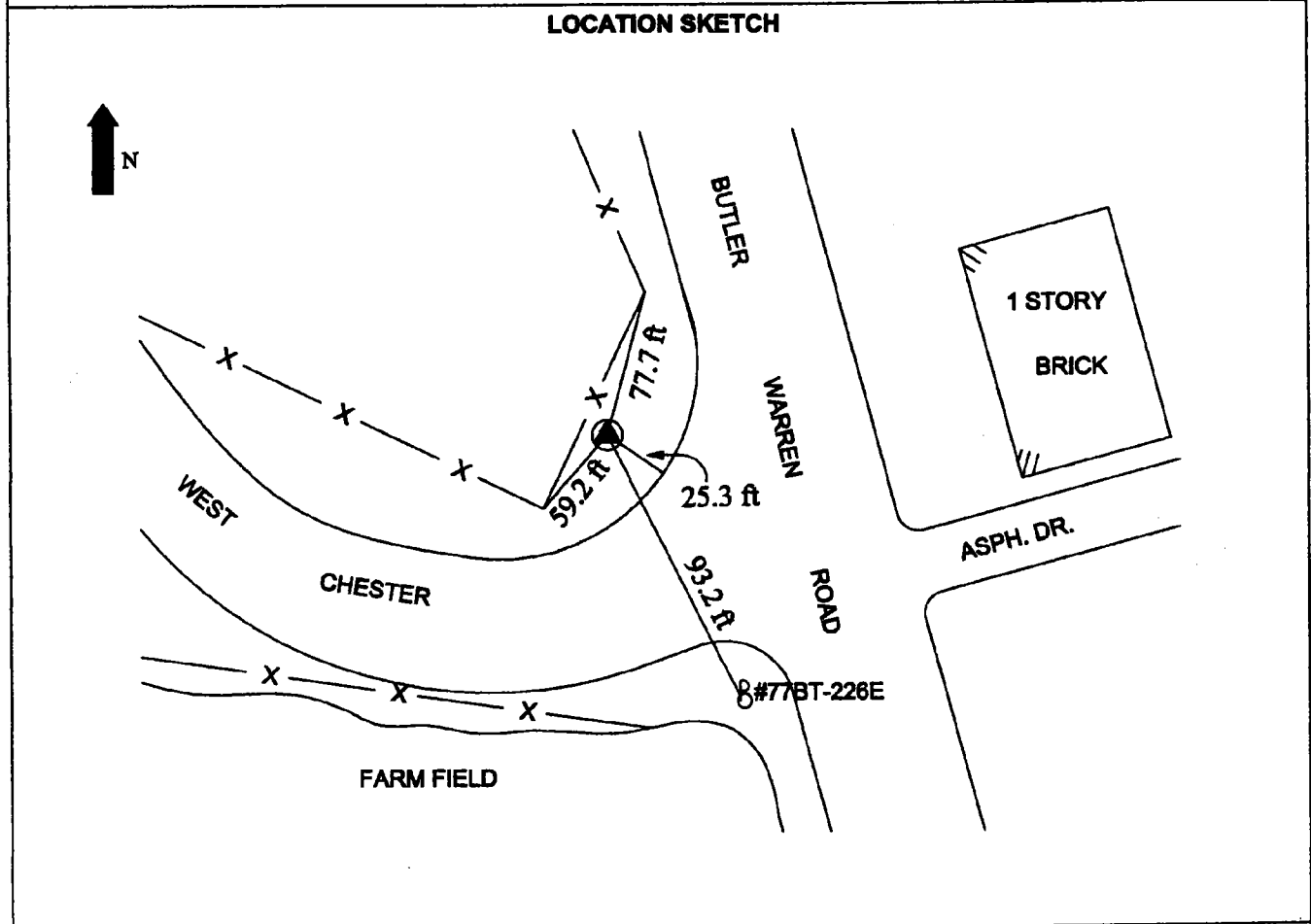
STATE: OHIO

LOCATION: Located on the west side of Butler-Warren County Line Rd. Monument is at the intersection of West Chester Rd.

Monument No: 99FC51	State Plane Coordinates: Meters (NAD 83/86)	Latitude and Longitude: (NAD 83/86)
Elevation: Meters (NAVD 88) GPS 284.453	NORTH 147915.628 EAST 440372.025	LAT 39° 19' 03.63082" LONG 84° 21' 04.57204"

Grid Scale Factor: 0.999936582	Convergence: -1° 10' 28.80117"
Azimuth to 99FC51A is 271° 07' 49" (grid)	Distance is 620.355 m

MONUMENT DESCRIPTION:
Butler County Monument -1/2" x 30" rebar in monument (not necessarily centered). Butler County disk marked "99FC51", with center punch mark.



DATA BY: GRW AERIAL SURVEYS 801 CORPORATE DR. LEXINGTON, KY 40503 606-223-3999	TYPE OF EQUIPMENT USED: Trimble 4000SSI dual frequency receivers with compact L1/L2 antennae with ground plane	SHEET NO. 32
---	--	-------------------------------