

S:\Design\Projects\Millikin\2200712\00712\adm\in\reviews\final tracings\Consultant Files\Roadway\Sheets\00712\00001_010424.dgn Sheet 1/4/2024 3:57:45 PM miles

ITEM	ITEM EXT	GRAND TOTAL	UNIT	DESCRIPTION	SEE SHEET NO.	ITEM	ITEM EXT	GRAND TOTAL	UNIT	DESCRIPTION	SEE SHEET NO.
201	11000	LS		CLEARING AND GRUBBING							
202	23000	3,480	SY	PAVEMENT REMOVED		659	00100	2	EACH	SOIL ANALYSIS TEST	
202	23000	165	SY	PAVEMENT REMOVED DRIVEWAYS (CONCRETE)		659	10001	5,730	SY	SEEDING AND MULCHING, AS PER PLAN	
202	35100	318	FT	PIPE REMOVED, 24" AND UNDER		659	14000	573	SY	REPAIR SEEDING AND MULCHING	
202	58100	4	EACH	CATCH BASIN REMOVED							
202	53100	5	EACH	MAILBOX REMOVED		659	20000	0.52	TON	COMMERCIAL FERTILIZER	6
						659	35000	30	MGAL	WATER	
203	10000	2,620	CY	EXCAVATION		659	00300	630	CY	TOPSOIL	
203	20000	1,153	CY	EMBANKMENT							
						659	00300	51.5	MSF	MOWING	
						660	25000	311	SY	SODDING STAKED	
						690	50100	5	EACH	SPECIAL - MAILBOX SUPPORT SYSTEM, SINGLE	6
						691	00500	6000	SY	SPECIAL - HERBICIDE FOR WEED CONTROL	
204	10000	4,877	SY	SUBGRADE COMPACTION							
204	13000	1,856	CY	EXCAVATION OF SUBGRADE							
204	30020	1,856	CY	GRANULAR MATERIAL, TYPE C							
204	45000	3	HOUR	PROOF ROLLING		621	00100	69	EACH	RPM	
204	50000	4772	SY	GEOTEXTILE FABRIC		630	84900	10	EACH	REMOVAL OF GROUND MOUNTED SIGN AND DISPOSAL	
254	01000	1,351	SY	PAVEMENT PLANING, ASPHALT CONCRETE 1.5"		630	86002	10	EACH	REMOVAL OF GROUND MOUNTED POST SUPPORT AND DISPOSAL	
						630	03100	365	FT	GROUND MOUNTED SUPPORT, NO. 3 POST	
301	56000	701	CY	ASPHALT CONCRETE BASE, PG64-22, (449)		630	80100	154	SF	SIGN, FLAT SHEET	
304	20000	833	CY	AGGREGATE BASE		630	97700	8	EACH	SIGN, MISC.: U-CHANNEL SIGNPOST ANCHOR, AS PER PLAN	6
304	20000	46	CY	AGGREGATE BASE PARKING LOT							
						644	00300	0.18	MILE	CENTER LINE	
407	20000	483	GAL	NON-TRACKING TACK COAT		644	00100	0.30	MILE	EDGE LINE, 4"	
408	10000	1,702	GAL	PRIME COAT		644	00400	228	FT	CHANNELIZING LINE, 8"	
						644	01514	133	FT	DOTTED LINE, 8"	
441	50000	206	CY	ASPHALT CONCRETE SURFACE COURSE, TYPE 1, (448), PG64-22		644	00700	119	FT	TRANSVERSE/DIAGONAL LINE	
441	70000	16	CY	ASPHALT CONCRETE SURFACE COURSE, TYPE 1, (449), PG64-22 FOR PARKING LOT							
441	50300	193	CY	ASPHALT CONCRETE INTERMEDIATE COURSE, TYPE 2, (448)		644	20800	64	FT	YIELD LINE SHARK TEETH	
						644	00900	58	SF	ISLAND MARKING	
451	14011	261	SY	9" REINFORCED CONCRETE PAVEMENT, CLASS QC 1P, AS PER PLAN		644	01300	2	EACH	LANE ARROW	
451	20000	1	EA	REINFORCED CONCRETE PAVEMENT, MISC.:SAMPLE (STAMPED) AS PER PLAN	6	644	01110	1	EACH	SCHOOL SYMBOL MARKING, 96"	
452	10010	172	SY	6" NON-REINFORCED CONCRETE PAVEMENT, CLASS QC 1P, FOR DRIVEWAYS							
						832	15000	LS		STORM WATER POLLUTION PREVENTION PLAN	
602	20000	1	CY	CONCRETE MASONRY HEADWALLS		832	15002	LS		STORM WATER POLLUTION PREVENTION INSPECTIONS	
605	14000	2,083	FT	6" BASE PIPE UNDERDRAINS		832	15010	LS		STORM WATER POLLUTION PREVENTION INSPECTION SOFTWARE	
						832	30000	16,000	EACH	EROSION CONTROL	
609	12000	1,532	FT	COMBINATION CURB AND GUTTER, TYPE 2							
609	22000	89	FT	CURB, TYPE 3							
609	26000	191	FT	CURB, TYPE 6							
609	31000	264	FT	COMBINATION CURB AND GUTTER, TYPE 9		625	25409	185	FT	CONDUIT, 2", 725.051, AS PER PLAN	38
609	60000	353	SY	9" CONCRETE TRAFFIC ISLAND		625	25505	188	FT	CONDUIT, 3", 725.051, AS PER PLAN	39
						625	25605	114	FT	CONDUIT, 4", 725.051, AS PER PLAN	38
611	00406	100	FT	4" CONDUIT, TYPE F, CONTINGENCY		625	29002	241	FT	TRENCH, 24" DEEP	
611	01500	100	FT	6" CONDUIT, TYPE F, CONTINGENCY		625	98000	28188	EACH	LIGHTING, MISC.: AS PER PLAN	38
611	01500	100	FT	6" CONDUIT, TYPE F, FOR UNDERDRAIN OUTLET		625	98000	3	EACH	LIGHTING, MISC.:INSTALL PULL BOX 1, SUPPLIED BY OTHERS	38
611	04600	100	FT	12" CONDUIT, TYPE C							
611	04400	270	FT	12" CONDUIT, TYPE B		625	39000	LS		TEMPORARY LIGHTING , AS PER PLAN	38
611	04900	25	FT	12" CONDUIT, TYPE D							
611	05900	119	FT	15" CONDUIT, TYPE B		638	04801	116	FT	3/4" COPPER SERVICE BRANCH, AS PER PLAN	39A
611	07400	265	FT	18" CONDUIT, TYPE B		638	04901	194	FT	1" COPPER SERVICE BRANCH, AS PER PLAN	39A
611	07600	12	FT	18" CONDUIT, TYPE C		638	00705	160	FT	6" DUCTILE IRON PIPE, AS PER PLAN	39A
611	52500	96	FT	30" CONDUIT, TYPE B, 707.33		638	10400	1	EACH	FIRE HYDRANT ADJUSTED TO GRADE	39A
						638	10501	1	EACH	FIRE HYDRANT REMOVED AND RESET, AS PER PLAN	39A
611	98150	4	EACH	CATCH BASIN, NO. 3		638	10800	2	EACH	VALVE BOX ADJUSTED TO GRADE	39A
611	98151	3	EACH	CATCH BASIN, NO. 3, AS PER PLAN	6	638	07801	1	EACH	6" VALVE AND VALVE BOX, AS PER PLAN	39A
611	98450	1	EACH	CATCH BASIN, NO. 2-2A		638	11101	5	EACH	METER AND CHAMBER REMOVED AND RESET, AS PER PLAN	39A
611	98470	1	EACH	CATCH BASIN, NO. 2-2B		638	10901	2	EACH	SERVICE BOX ADJUSTED TO GRADE. AS PER PLAN	39A
611	99574	3	EACH	MANHOLE, NO. 3							
611	99582	1	EACH	MANHOLE, NO. 3 WITH 90" BASE I.D. AND 8" WEIR							
895	10020	1	EACH	MANUFACTURED WATER QUALITY STRUCTURE, TYPE 2							
						623	40500	1	EACH	REFERENCE MONUMENT, TYPE A	5,41
614	11000	LS		MAINTAINING TRAFFIC		623	40900	3	EACH	MONUMENT, MISC.: MAG SPIKE, AS PER PLAN	5,41
615	25001	720	SY	PAVEMENT FOR MAINTAINING TRAFFIC, CLASS B, AS PER PLAN	7	623	50000	LS		PRECONSTRUCTION SURVEY MONUMENT VERIFICATION AND REPORT	
615	10000	LS		ROADS FOR MAINTAINING TRAFFIC							
						619	16010	3	MNTH	FIELD OFFICE, TYPE B	
616	10000	5	MGAL	WATER							
623	10000	LS		CONSTRUCTION LAYOUT STAKES AND SURVEYING							
624	10000	LS		MOBILIZATION							

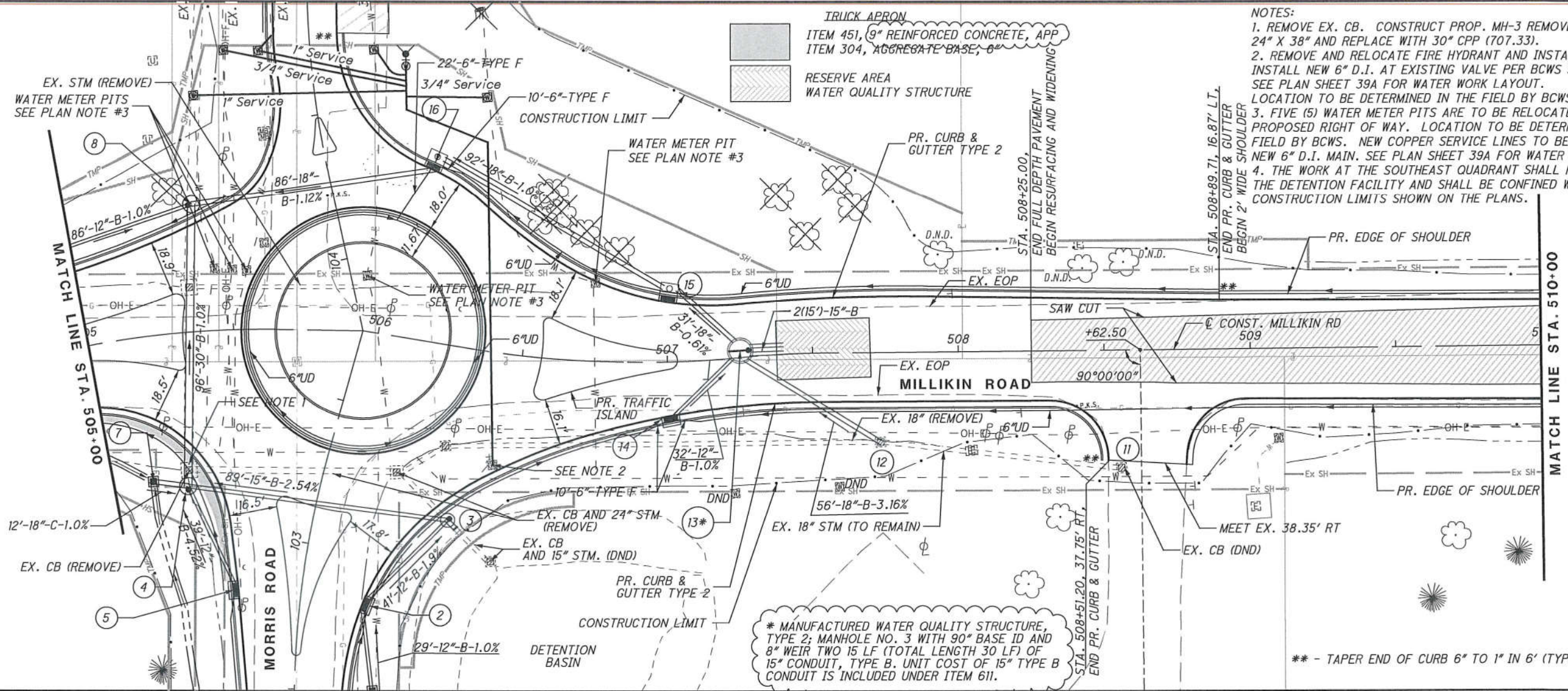
GENERAL SUMMARY

BUT - CR 22-0.63 / TR 106 - 2.99

CALCULATED
JA

CHECKED
JA

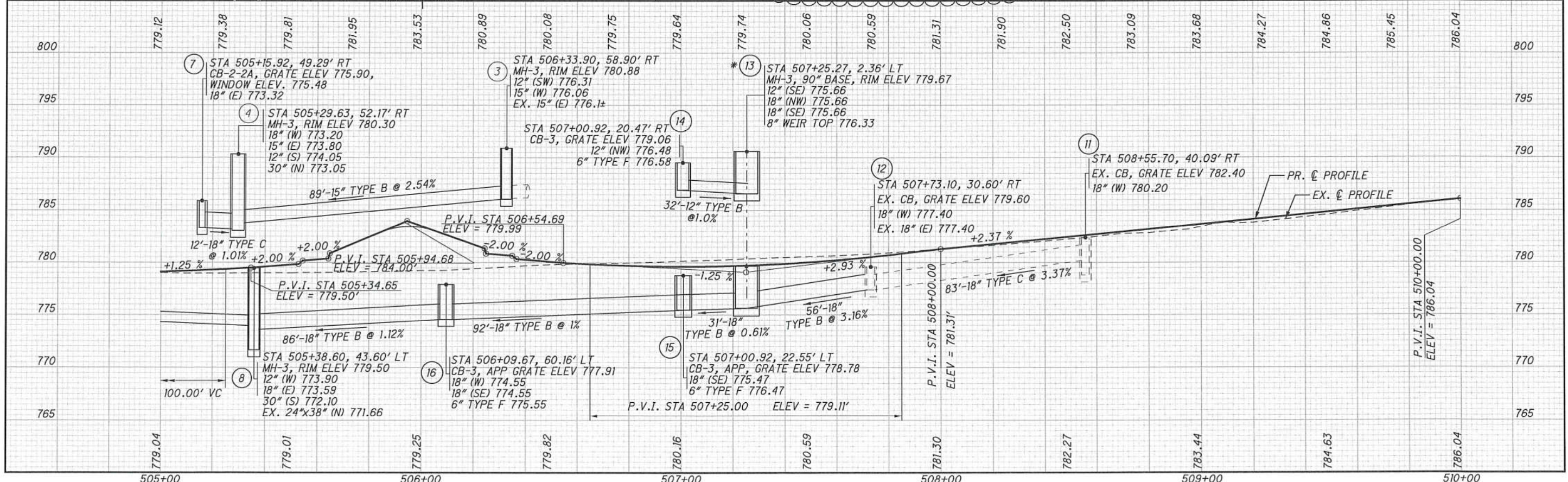
S:\Design\Projects\Millikin\2200712\2200712\admin\reviews\final tracings\Consultant Files\Roadway\Sheets\00712\002-010\24.dgn 1/4/2024 4:03:38 PM miles



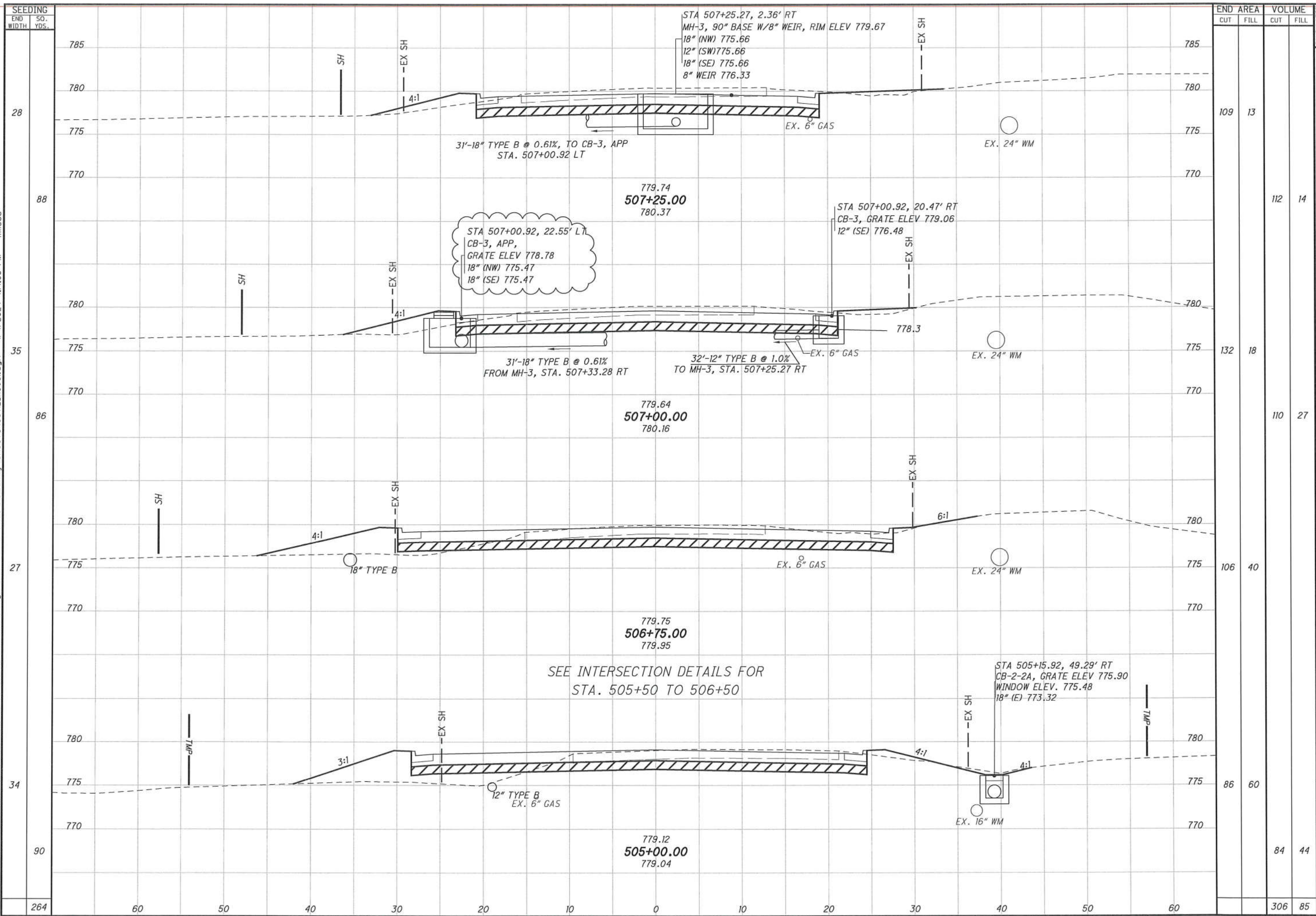
PLAN AND PROFILE MILLIKIN ROAD
STA. 505+00 TO STA. 510+00

BUT-CR 22-0.63/
TR 106-2.99

13
50



S:\Design\Projects\Millikin\2200712\00712\admin\reviews\final tracings\Consultant Files\Roadway\Sheets\00712_XS001.dgn 1/4/2024 4:14:08 PM miles



STATION	END AREA		VOLUME	
	CUT	FILL	CUT	FILL
507+25.00	109	13	112	14
507+00.00	132	18	110	27
506+75.00	106	40		
505+00.00	86	60	84	44
TOTAL	306	85		

CROSS SECTIONS MILLIKIN ROAD
STA. 505+00.00 TO STA. 507+25.00
BUT-CR 22-0.63/
TR 106-2.99
 CALCULATED JA
 CHECKED JA
 21/50