



October 31, 2024

Hamilton New London & Nichols Road Superstructure Replacement

BUT-CR30-00.450 & BUT-TR195-01.297 (2024-17)

Addendum #1

Note: All Questions shall be submitted in writing to David Quimby at quimbyd@bceo.org; Erich Ziegler at zieglere@bceo.org and Melissa Taylor at taylorm@bceo.org.

Add Note: Rain days will be 1:1 if scheduled to work per 108.06.C-paragraph 4.

Add Note: A maximum of one (1), 1/8" Preformed Bearing Pad shim is permitted per bearing pad.

Add Sheets: Hamilton New London Road Detour & Nichols Road Detour.

Delete Item: #19, 503E21101, Unclassified Excavation, APP, 1 CY. (Hamilton New London)

Delete Item: #74, 503E21101, Unclassified Excavation, APP, 1 CY. (Nichols)

Add Item: #119, 503E21301, Unclassified Excavation, APP, 1 LS. (Hamilton New London)

Add Item: #120, 503E21301, Unclassified Excavation, APP, 1 LS. (Nichols)

Add Item: #121, 202E11005, Structure Removed, APP, 14 EACH. (Nichols)

Once the existing superstructure is removed, the elevations at the proposed beam seat locations shall be surveyed and submitted to the engineer for review. The engineer will determine which locations to grind as described on page 17 of 23; note 5, up to 1/4". It also includes providing positive drainage for the beam seat.

Updated Engineer's Estimate: \$1,292,762

Clarifications:

Q1: Unclassified excavation is 1 CY. Should that be 1 LS?

A1: Yes.

Q2: Can a vibratory screed be used on either structure in lieu of a bridge deck finishing machine?

A2: No.

Q3: Can we tine either deck instead of grooving?

A3: No.



Q4: Does BCEO follow ODOT's alternate curing method using E5 additive in concrete in lieu of water cure?

A4: No.

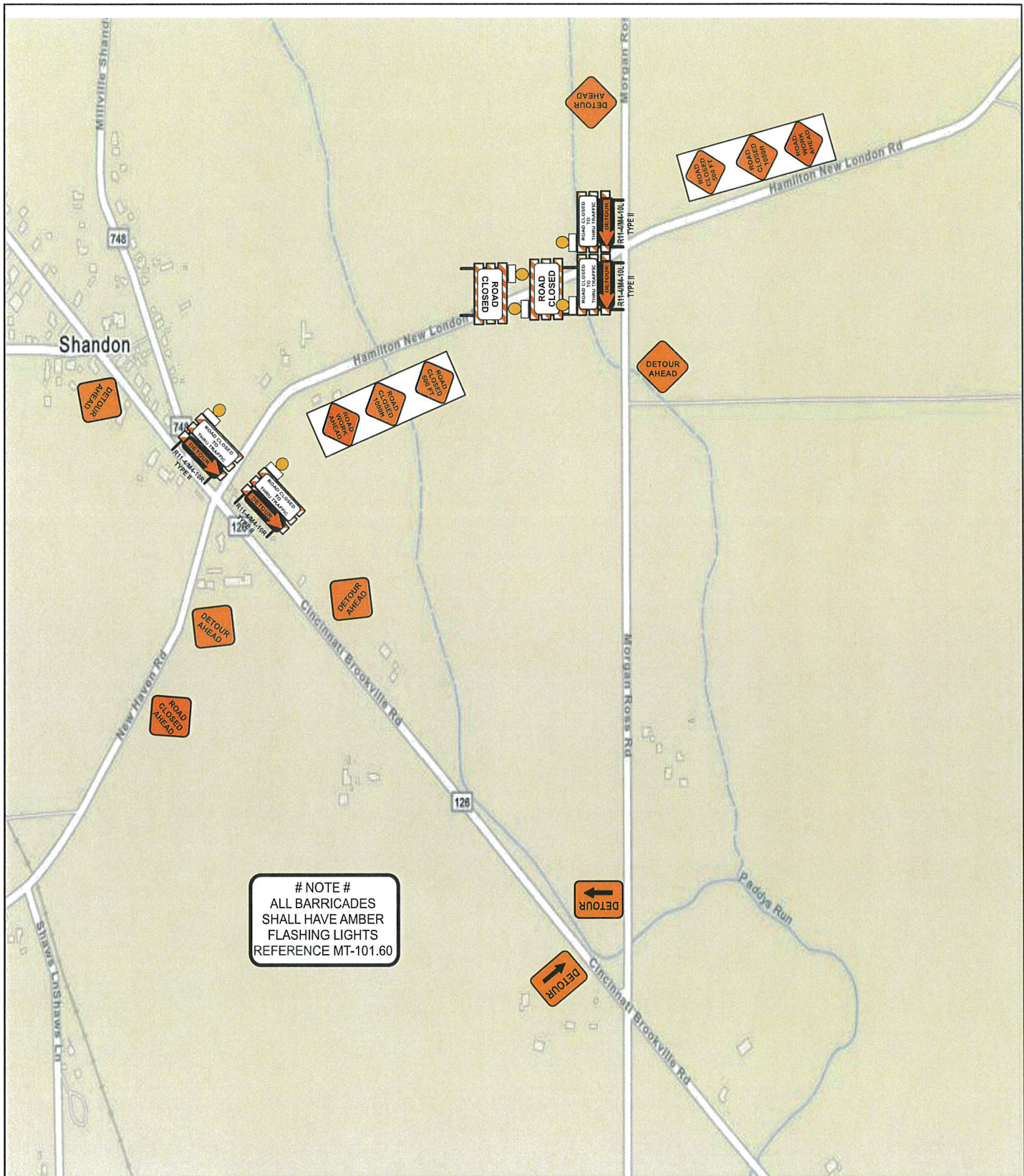
Q5: Are the grinding of the beam seats for Nichols bridge to level them? Can you give a depth in inches?

A5: Please see added line Item 121.

Please e-mail or call our office when you have received this Addendum.

taylor@mceo.org

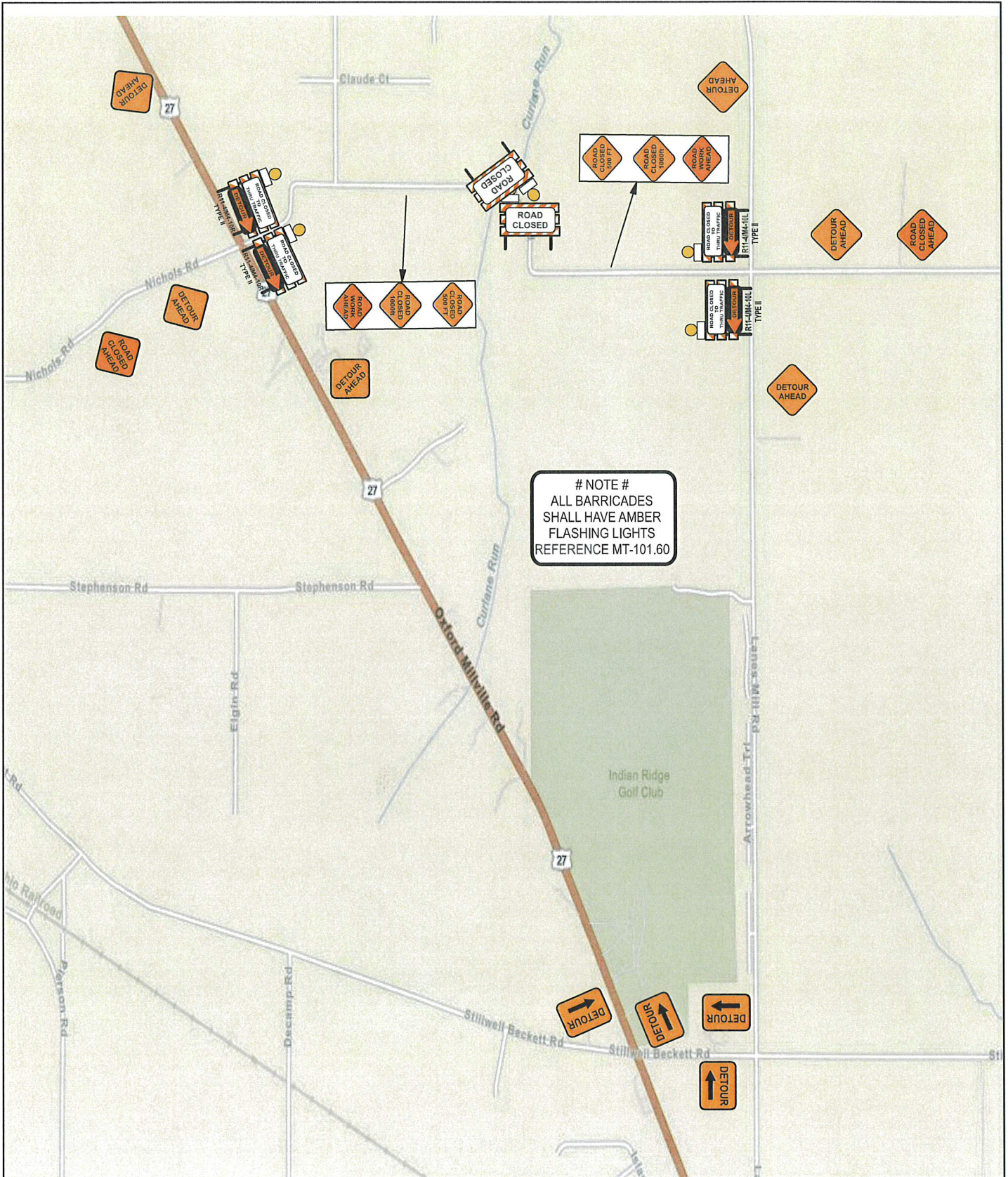
Melissa Taylor; 513-785-4115




Date: 10/30/2024 **Author:** Jester **Project:** Hamilton New London Rd #0.45

Comments:
Mot





	<p>Date: 10/30/2024 Author: Jester Project: Nichols Rd # 1.29</p> <p>Comments: Mot</p>
---	--

ADDENDUM #1						
Contract HAMILTON NEW LONDON ROADBUT-CR30-00.450 AND BUT-TR195-01.297, NICHOLS ROAD SUPERSTRUCTURE REPLACEMENT - Schedule of Prices						
Report Date: 10/31/2024						
Line	Number	Description	Unit	Quantity	Bid Unit Price	Bid Total
HAMILTON NEW LONDON ROAD						
1	201E11000	CLEARING AND GRUBBING	LS	1		
2	202E11203	PORTIONS OF STRUCTURE REMOVED, OVER 20 FOOT SPAN, AS PER PLAN	LS	1		
3	202E23000	PAVEMENT REMOVED Asphalt Concrete	SY	215		
4	202E23500	WEARING COURSE REMOVED	SY	60		
5	202E35100	PIPE REMOVED, 24" AND UNDER	FT	20		
6	202E38000	GUARDRAIL REMOVED	FT	204		
7	203E10000	EXCAVATION	CY	60		
8	203E20000	EMBANKMENT	CY	35		
9	204E10000	SUBGRADE COMPACTION	SY	340		
10	254E01000	PAVEMENT PLANING, ASPHALT CONCRETE	SY	438		
11	301E56000	ASPHALT CONCRETE BASE, PG64-22, (449)	CY	42		
12	301E56100	ASPHALT CONCRETE BASE, PG64-22, (449), (DRIVEWAYS)	CY	6.6		
13	304E20000	AGGREGATE BASE	CY	44		
14	407E20000	NON-TRACKING TACK COAT	GAL	54		
15	441E50000	ASPHALT CONCRETE SURFACE COURSE, TYPE 1, (448), PG64-22	CY	31		
16	441E50000	ASPHALT CONCRETE SURFACE COURSE, TYPE 1, (448), PG64-22 Driveways	CY	2.8		
17	441E50300	ASPHALT CONCRETE INTERMEDIATE COURSE, TYPE 2, (448) PG 64-22	CY	12		
18	503E11100	COFFERDAMS AND EXCAVATION BRACING	LS	1		
20	509E10000	EPOXY COATED STEEL REINFORCEMENT	LB	2,871		
21	511E53014	CLASS QC3 CONCRETE, MISC.: Superstructure, As Per Plan	CY	11		
22	511E81200	CONCRETE, MISC.: Concrete Deck Test Slab	LS	1		
23	512E10100	SEALING OF CONCRETE SURFACES (EPOXY-URETHANE)	SY	82		
24	512E10400	TREATING OF CONCRETE BRIDGE DECK WITH SRS	SY	62		
25	512E33000	TYPE 2 WATERPROOFING	SY	3.6		
26	515E12010	PRESTRESSED CONCRETE COMPOSITE BOX BEAM BRIDGE MEMBERS, LEVEL 1, CB12-48 23' - 0"	EACH	6		
27	516E13600	1" PREFORMED EXPANSION JOINT FILLER	SF	27		
28	516E25000	NYLON REINFORCED NEOPRENE SHEETING	SF	139		
29	516E41100	1/8" PREFORMED BEARING PAD, TYPE CDP	EACH	12		
30	516E42000	ELASTOMERIC BEARING PAD, MISC.: 11"x8"x1" Plain (Neoprene)	EACH	24		
31	517E72306	RAILING (DEEP BEAM RAIL WITH STEEL TUBULAR BACKUP AND TYPE 2 STEEL POSTS)	FT	55		
32	517E75600	DEEP BEAM BRIDGE RETROFIT RAILING	FT	55		
33	518E22300	SPECIAL - STEEL DRIP STRIP	FT	52		
34	519E11101	PATCHING CONCRETE STRUCTURE, AS PER PLAN	SF	3		
35	606E15050	GUARDRAIL, TYPE MGS	FT	100		
36	606E26150	ANCHOR ASSEMBLY, MGS TYPE E	EACH	4		

ADDENDUM #1						
Contract HAMILTON NEW LONDON ROAD BUT-CR30-00.450 AND BUT-TR195-01.297, NICHOLS ROAD SUPERSTRUCTURE REPLACEMENT - Schedule of Prices						
Report Date: 10/31/2024						
Line	Number	Description	Unit	Quantity	Bid Unit Price	Bid Total
37	606E35140	BRIDGE TERMINAL ASSEMBLY, TYPE 4	EACH	4		
38	614E11000	MAINTAINING TRAFFIC	LS	1		
39	623E10000	CONSTRUCTION LAYOUT STAKES AND SURVEYING	LS	1		
40	624E10000	MOBILIZATION	LS	1		
41	626E00110	BARRIER REFLECTOR, TYPE 2 Bidirectional	EACH	12		
42	646E10000	EDGE LINE, 4"	MILE	0.11		
43	646E10200	CENTER LINE	MILE	0.055		
44	659E10001	SEEDING AND MULCHING, AS PER PLAN	SY	915		
45	659E20000	COMMERCIAL FERTILIZER	TON	0.016		
46	659E35000	WATER	MGAL	5		
47	671E15010	EROSION CONTROL MAT, TYPE B	SQ YD	50		
48	832E15000	STORM WATER POLLUTION PREVENTION PLAN THIS ITEM INCLUDES ALL COSTS ASSOCIATED WITH THE DEVELOPEMENT, IMPLEMENTATION, INSPECTION AND THE REQUIRED DOCUMENTATION OF A STORM WATER POLLUTION PREVENTION PLAN FOR THE PROJECT DESCRIBED IN THIS CONTRACT. ALL OF THE SPECIFICATIONS AND REQUIREMENTS OF ODOT SUPPLEMENTAL SPECIFICIATION 832 SHALL APPLY.	LS	1		
49	832E15002	STORM WATER POLLUTION PREVENTION INSPECTIONS	LS	1		
50	832E30000	EROSION CONTROL THIS ITEM IS FOR THE INSTALLATION OF STORM WATER BMPS AS DEFINED IN APPENDIX "F" OF ODOT SUPPLEMENTAL SPECIFICATION 832. THE CONTRACTOR SHALL ENTER \$1.00 IN THE UNIT PRICE COLUMN AND \$5,000.00 IN THE TOTAL COLUMN. IF THE CONTRACTOR NEGLECTS TO ENTER THE CORRECT FIGURE(S) THE CONTRACTOR'S BID WILL BE CORRECTED AND THE PROCESS FOR "MISTAKE IN BID" SHALL FOLLOW. NO WORK WILL BE RECOGNIZED OR PAID UNDER THIS ITEM UNLESS AGREED UPON AND APPROVED BY AN AUTHORIZED REPRESENTATIVE OF THE BUTLER COUNTY ENGINEER'S OFFICE.	EACH	5,000		
51	846E00110	POLYMER MODIFIED ASPHALT EXPANSION JOINT SYSTEM	CF	6.7		
52	BC811E04900	12" CONDUIT, TYPE D 707.33	LF	60		
119	503E21301	UNCLASSIFIED EXCAVATION, AS PER PLAN	LS	1		
					TOTAL: HAMILTON NEW LONDON ROAD	
INCIDENTALS						
53	802E00001	PREMIUM ON INDUSTRIAL INSURANCE	LS	1		
54	802E00002	PREMIUM ON BID BOND	LS	1		
55	802E00003	CONTINGENCIES THE CONTRACTOR SHALL ENTER \$1.00 IN THE UNIT PRICE COLUMN AND \$50,000.00 IN THE TOTAL COLUMN. IF THE CONTRACTOR NEGLECTS TO ENTER THE CORRECT FIGURE(S), THE CONTRACTOR'S BID SHALL BE CORRECTED AND THE PROCESS FOR MISTAKE IN BID SHALL FOLLOW. THIS ITEM WILL BE USED IN THE EVENT THAT THERE ARE CHANGE ORDERS DURING THE CONTRACT. NO EXTRA WORK OR CHANGE ORDER WILL BE PAID OR RECOGNIZED UNLESS AGREED UPON IN WRITING BY AN AUTHORIZED REPRESENTATIVE OF THE BUTLER COUNTY ENGINEER. ANY ITEM OVER THE PLAN QUANTITY WILL NOT BE PAID UNLESS IT HAS BEEN APPROVED BY AN AUTHORIZED REPRESENTATIVE OF THE BUTLER COUNTY ENGINEER'S OFFICE.	EA	50,000		
					TOTAL: INCIDENTALS	
NICHOLS ROAD						
56	201E11000	CLEARING AND GRUBBING	LS	1		
57	202E11203	PORTIONS OF STRUCTURE REMOVED, OVER 20 FOOT SPAN, AS PER PLAN	LS	1		

ADDENDUM #1						
Contract HAMILTON NEW LONDON ROADBUT-CR30-00.450 AND BUT-TR195-01.297, NICHOLS ROAD SUPERSTRUCTURE REPLACEMENT - Schedule of Prices						
Report Date: 10/31/2024						
Line	Number	Description	Unit	Quantity	Bid Unit Price	Bid Total
58	202E23000	PAVEMENT REMOVED Asphalt Concrete	SY	348		
59	202E23500	WEARING COURSE REMOVED	SY	153		
60	202E38000	GUARDRAIL REMOVED	FT	444		
61	202E53100	MAILBOX REMOVED	EACH	1		
62	203E10000	EXCAVATION	CY	311		
63	203E20000	EMBANKMENT	CU YD	824		
64	204E10000	SUBGRADE COMPACTION	SY	526		
65	254E01000	PAVEMENT PLANING, ASPHALT CONCRETE	SY	382		
66	301E56000	ASPHALT CONCRETE BASE, PG64-22, (449)	CY	81		
67	301E56100	ASPHALT CONCRETE BASE, PG64-22, (449), (DRIVEWAYS)	CY	4		
68	304E20000	AGGREGATE BASE	CY	84		
69	407E20000	NON-TRACKING TACK COAT	GAL	73		
70	441E10000	ASPHALT CONCRETE SURFACE COURSE, TYPE 1, (446), PG64-22	CY	29		
71	441E50000	ASPHALT CONCRETE SURFACE COURSE, TYPE 1, (448), PG64-22 Driveways	CY	2		
72	441E50301	ASPHALT CONCRETE INTERMEDIATE COURSE, TYPE 2, (448), AS PER PLAN	CY	34		
73	503E11100	COFFERDAMS AND EXCAVATION BRACING	LS	1		
75	509E10000	EPOXY COATED STEEL REINFORCEMENT	LB	8,108		
76	510E10001	DOWEL HOLES WITH NONSHRINK, NONMETALLIC GROUT, AS PER PLAN	EACH	73		
77	511E45710	CLASS QC1 CONCRETE, ABUTMENT	CY	7		
78	511E53014	CLASS QC3 CONCRETE, MISC.: Superstructure, APP	CY	35		
79	511E81200	CONCRETE, MISC.: Concrete Deck Test Slab	LS	1		
80	512E10100	SEALING OF CONCRETE SURFACES (EPOXY-URETHANE)	SY	165		
81	512E10400	TREATING OF CONCRETE BRIDGE DECK WITH SRS	SY	166		
82	512E10601	CONCRETE REPAIR BY EPOXY INJECTION, AS PER PLAN	FT	21		
83	512E33000	TYPE 2 WATERPROOFING	SY	7		
84	515E12090	PRESTRESSED CONCRETE COMPOSITE BOX BEAM BRIDGE MEMBERS, LEVEL 1, CB33-48	EACH	7		
85	516E13600	1" PREFORMED EXPANSION JOINT FILLER	SF	27		
86	516E25000	NYLON REINFORCED NEOPRENE SHEETING	SF	269		
87	516E41100	1/8" PREFORMED BEARING PAD	EACH	14		
88	516E43100	ELASTOMERIC BEARING WITH INTERNAL LAMINATES ONLY (NEOPRENE)	EACH	28		
89	517E70000	RAILING (TWIN STEEL TUBE)	FT	110		
90	518E22300	SPECIAL - STEEL DRIP STRIP	FT	123		
91	519E11101	PATCHING CONCRETE STRUCTURE, AS PER PLAN	SF	19		
92	601E34100	ROCK CHANNEL PROTECTION, TYPE B WITHOUT FILTER	CY	348		
93	602E20000	CONCRETE MASONRY Headwalls	CY	14.2		
94	606E15050	GUARDRAIL, TYPE MGS	FT	75		

ADDENDUM #1						
Contract HAMILTON NEW LONDON ROADBUT-CR30-00.450 AND BUT-TR195-01.297, NICHOLS ROAD SUPERSTRUCTURE REPLACEMENT - Schedule of Prices						
Report Date: 10/31/2024						
Line	Number	Description	Unit	Quantity	Bid Unit Price	Bid Total
95	606E26550	ANCHOR ASSEMBLY, MGS TYPE T	EACH	1		
96	606E35002	MGS BRIDGE TERMINAL ASSEMBLY, TYPE 1	EACH	4		
97	614E11000	MAINTAINING TRAFFIC	LS	1		
98	623E10000	CONSTRUCTION LAYOUT STAKES AND SURVEYING	LS	1		
99	624E10000	MOBILIZATION	LS	1		
100	626E00110	BARRIER REFLECTOR, TYPE 2 Bidirectional	EACH	10		
101	630E03100	GROUND MOUNTED SUPPORT, NO. 3 POST	FT	26		
102	630E84900	REMOVAL OF GROUND MOUNTED SIGN AND DISPOSAL	EACH	4		
103	630E85100	REMOVAL OF GROUND MOUNTED SIGN AND REERECTION	EACH	2		
104	630E86002	REMOVAL OF GROUND MOUNTED POST SUPPORT AND DISPOSAL	EACH	6		
105	646E10000	EDGE LINE, 4"	MILE	0.14		
106	646E10200	CENTER LINE	MILE	0.07		
107	659E10001	SEEDING AND MULCHING, AS PER PLAN	SY	2,157		
108	659E20000	COMMERCIAL FERTILIZER	TON	0.19		
109	659E35000	WATER	MGAL	12		
110	670E00530	SLOPE EROSION PROTECTION MAT, TYPE C	SY	35		
111	671E15010	EROSION CONTROL MAT, TYPE B	SY	90		
112	690E50000	SPECIAL - MAILBOX SUPPORT	EACH	1		
113	832E15000	STORM WATER POLLUTION PREVENTION PLAN THIS ITEM INCLUDES ALL COSTS ASSOCIATED WITH THE DEVELOPEMENT, IMPLEMENTATION, INSPECTION AND THE REQUIRED DOCUMENTATION OF A STORM WATER POLLUTION PREVENTION PLAN FOR THE PROJECT DESCRIBED IN THIS CONTRACT. ALL OF THE SPECIFICATIONS AND REQUIREMENTS OF ODOT SUPPLEMENTAL SPECIFICIATION 832 SHALL APPLY.	LS	1		
114	832E15002	STORM WATER POLLUTION PREVENTION INSPECTIONS	LS	1		
115	832E30000	EROSION CONTROL THIS ITEM IS FOR THE INSTALLATION OF STORM WATER BMPS AS DEFINED IN APPENDIX "F" OF ODOT SUPPLEMENTAL SPECIFICATION 832. THE CONTRACTOR SHALL ENTER \$1.00 IN THE UNIT PRICE COLUMN AND \$10,000.00 IN THE TOTAL COLUMN. IF THE CONTRACTOR NEGLECTS TO ENTER THE CORRECT FIGURE(S) THE CONTRACTOR'S BID WILL BE CORRECTED AND THE PROCESS FOR "MISTAKE IN BID" SHALL FOLLOW. NO WORK WILL BE RECOGNIZED OR PAID UNDER THIS ITEM UNLESS AGREED UPON AND APPROVED BY AN AUTHORIZED REPRESENTATIVE OF THE BUTLER COUNTY ENGINEER'S OFFICE.	EACH	10,000		
116	846E00110	POLYMER MODIFIED ASPHALT EXPANSION JOINT SYSTEM	CF	17		
117	BC811E2400	60" CONDUIT, TYPE C 707.33	FT	179		
118	BC811E98601	CATCH BASIN 2-6, AS PER PLAN	EA	1		
120	503E21301	UNCLASSIFIED EXCAVATION, AS PER PLAN	LS	1		
121	202E11005	STRUCTURE REMOVED, AS PER PLAN	EACH	14		
					TOTAL: NICHOLS ROAD	
					TOTAL BID:	