

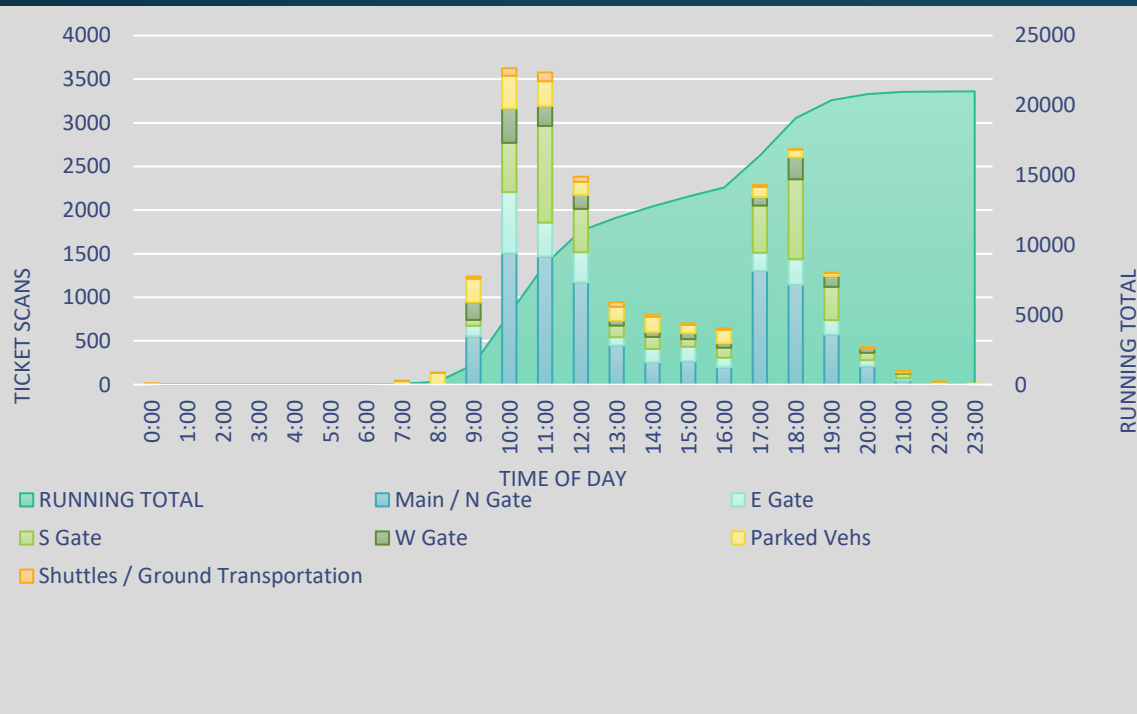


# Event Traffic Operations 2025 Cincinnati Open City of Mason

Steve Hartke  
City Engineer  
City of Mason

Andrea Harth  
Vice President of Operations  
TEC Engineering, Inc.

# Event Highlights



- Two-Week Event (August 11<sup>th</sup>-August 23<sup>rd</sup>)
- Expanded to a 96 player draw in 2025
- ATP Masters 1000 & WTA 1000 Series Event
- Top Rated Women's and Men's players in attendance
- Warm up to the US Open
- Regional Attraction
- Total Attendance 2025:285,571 fans
- Two sessions per day
  - 11am (Gates open 9:30am)
  - 7pm (Gates open at 5:30pm)

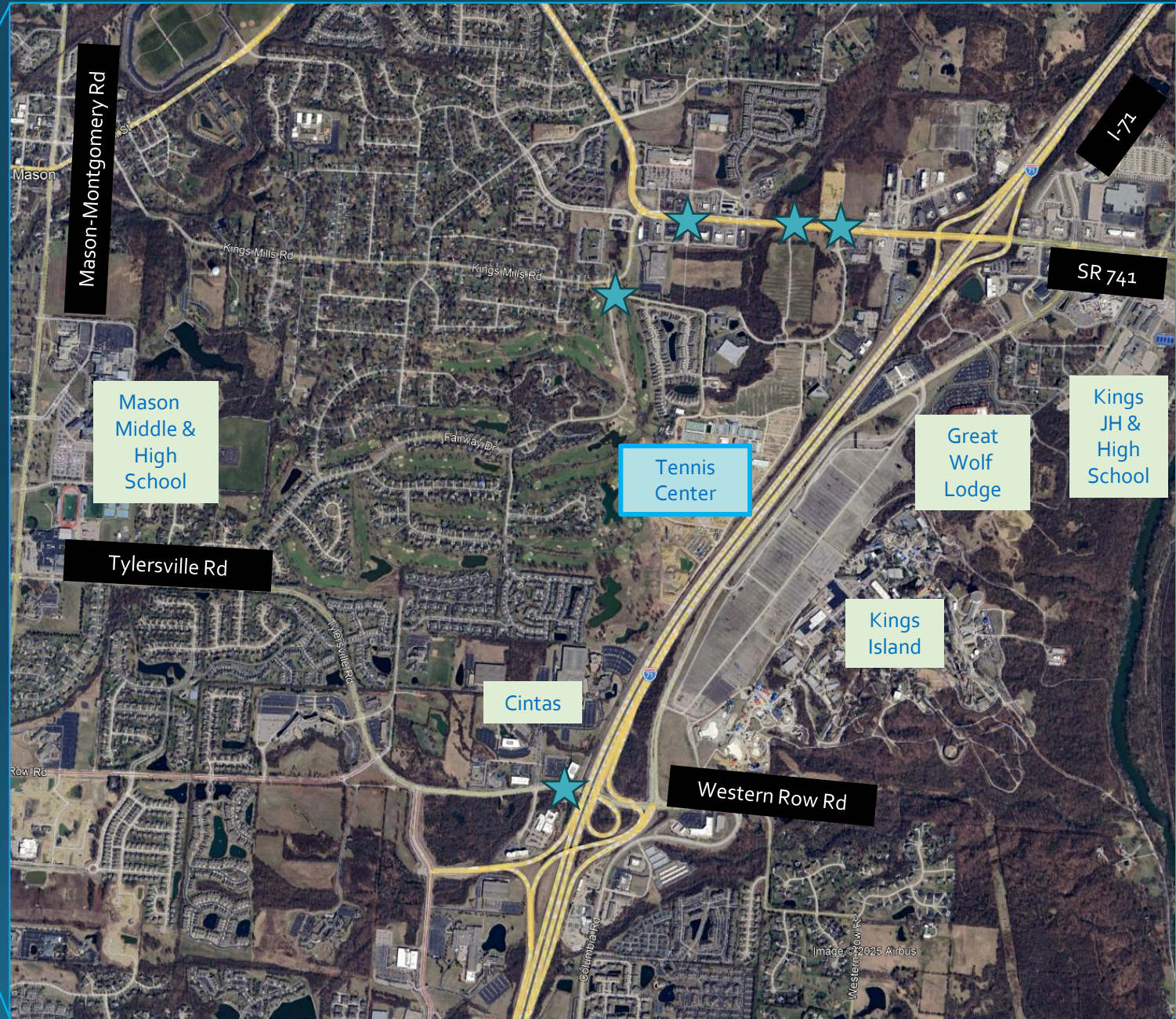
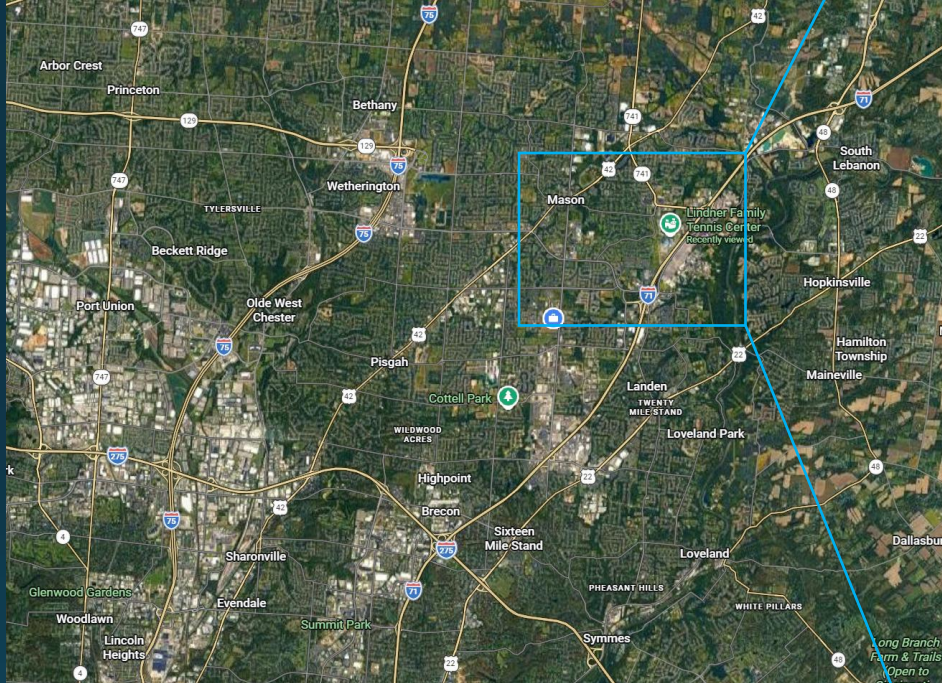
# Venue- Lindner Family Tennis Center

- Expanded in 2025
  - 31 Total Courts
  - Capacity ~25,000:
    - 11,614 (Center Court)
    - 5,000 (Grandstand)
    - 2,300 (Champions)
    - 4,000 (Stadium 3)
    - 2,000 (Court 10)



<https://cincinnatiopen.com/>

# Area Map



# Pre-Tournament Actions

- City Coordination with Tournament
- Meeting with Mason Police Department
- Created Manual Signal Operation Guide
- Install Temporary camera at Courseview
- Creation of Signal Timing Plans
  - Entering/Switchover/Exiting
- Signal Phasing Changes
  - Disable Opposing left turn phases at Courseview
  - Disable left turn phases at Beach (ended up putting them back)

## City of Mason, Ohio Manual Traffic Signal Operation Pocket Guide

### Purpose:

Quick-reference guide for safe manual operation of a traffic signal during emergencies or special events in the City of Mason.

### 1. PREPARE

- Know traffic pattern & peak flows
- Identify pedestrian crossings

### 2. ACCESS CABINET

- Locate signal controller (metal cabinet near the intersection)
- Unlock with “skeleton” key
- Be careful not to pull too much on the manual operation pushbutton
- When finished, always confirm panel door is latched, use key — NO SLAMMING

### 3. SWITCH TO/FROM MANUAL MODE

- Find toggle marked MAN
- Flip to **ON**
- When finished, flip the same toggle to **OFF**
- Always confirm the signal is cycling after completing manual operation

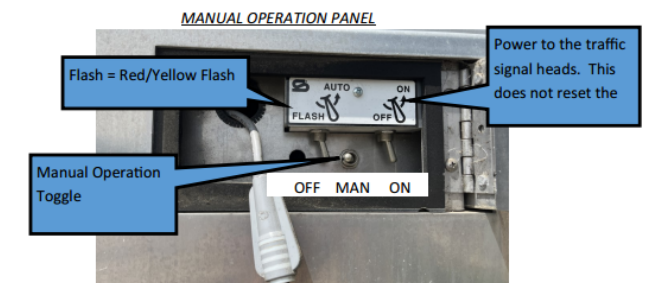
### 4. ORDER OF OPERATIONS

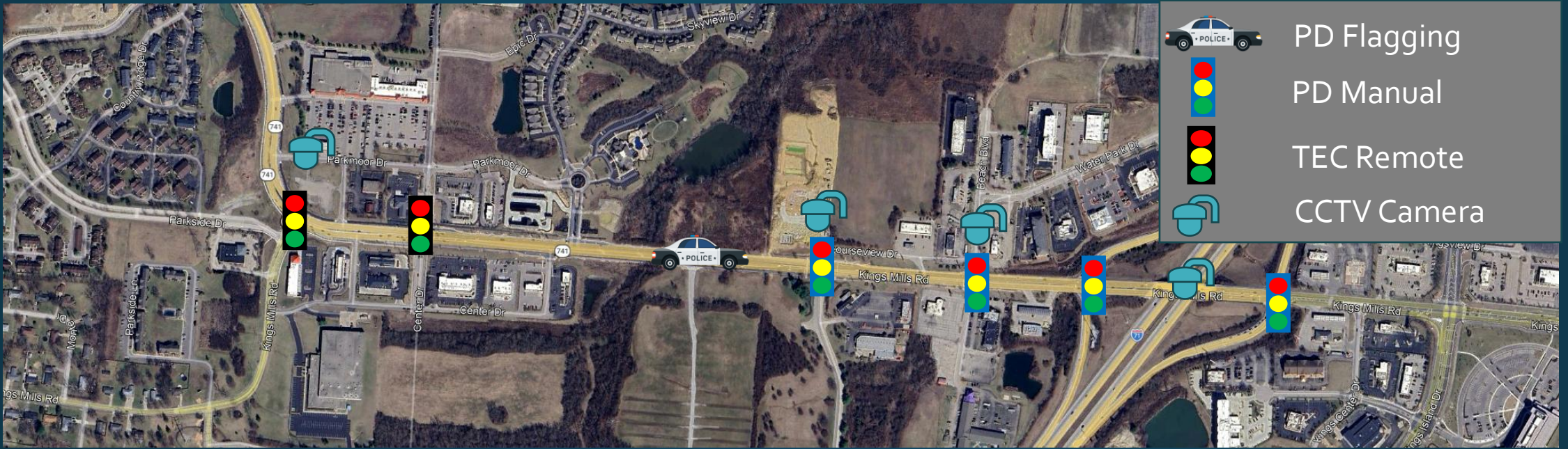
- Main Street left turns
- Main Street through/right (and pedestrian phases)
- Side Street left turns
- Side Street through/right (and pedestrian phases)

### 5. ADVANCE SIGNAL PHASES

- After toggling to “on” the signal will rest in its current phase until the button is pressed
- Press button to terminate current phase green (yellow and red will run on their own)
- After yellow and red, next phase green will run (minimum green must run prior to termination)
- If a pedestrian phase is present, button must be pressed to terminate the walk, and again to terminate the flashing don't walk
- The Flashing Don't Walk count down will only reduce by 20 seconds so the button may have to be pushed multiple times
- The Flashing Don't walk countdown will always display the number of seconds it “rested” in flashing don't walk previously. Don't be alarmed to see varying numbers.
- Best Practice: If a pedestrian phase is present, let the phase rest on WALK

**Please contact TEC Engineering on-call phone (513-884-7244) with any questions or concerns.**





# During Tournament

- Monitor via PTZ Camera
- Field calls from City/PD
- Adjust timing as needed until police take manual control
- Collect data- Counts and Drone Footage

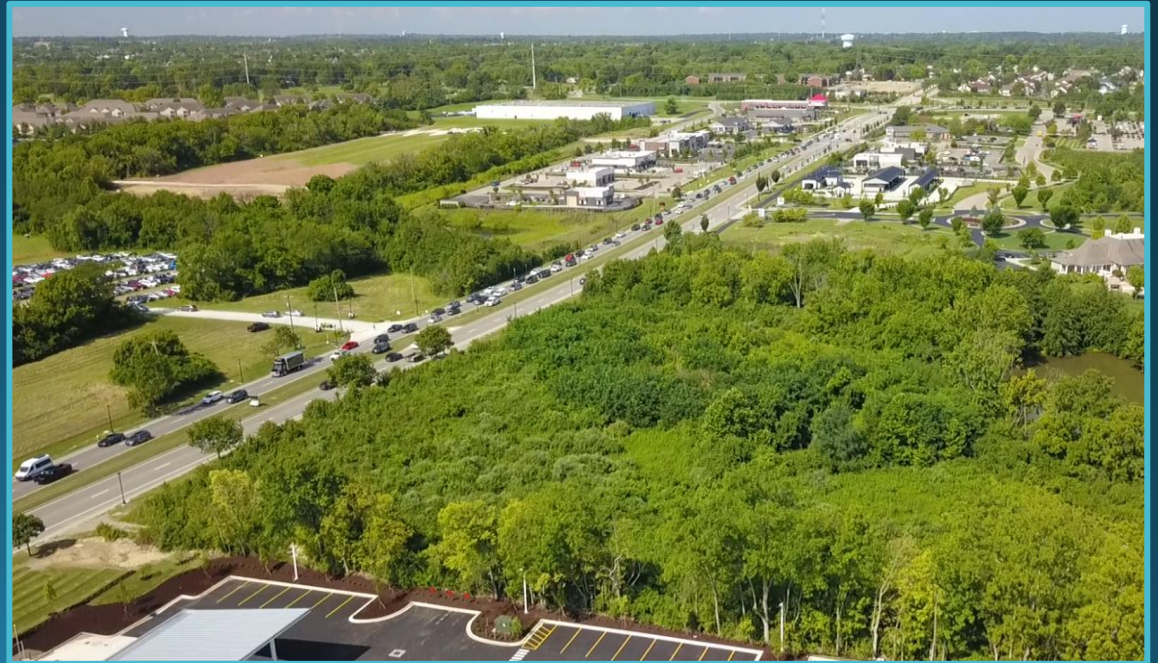
The screenshot displays a traffic management software interface with the following components:

- Entity Tree:** A hierarchical list of traffic signals and sections. The 'Signal Kings Mills & Courseview' is selected and highlighted in blue. Other signals include Kings Mills & Parkside, Kings Mills & Kroger, Kings Mills & Beach, Kings Mills & I 71 SB Ramp, Kings Mills & I 71 NB Ramp, Kings Mills & Kings Island Dr, Kings Mills & Columbia, Mason-Montgomery & Foxfield, Mason-Montgomery & Lakeside, Mason-Montgomery & Nixon Park, Mason-Montgomery & Tylersville, and Mason-Montgomery & Western Row.
- Map Viewer:** An aerial satellite map showing the Kings Mills area with various traffic signals marked by red and green icons. A blue square highlights the selected signal location.
- Signal Details Panel:** A table showing the status of the selected signal 'Kings Mills & Courseview - 192.165.100.39 (Cobalt)'. The 'Mode/Pattern' is 'TOD/20', 'Alarms/Preempt' is 'Error: 0s', and 'Counts' is '1000%'. Below the table are tabs for 'Map', 'Timings', and 'Misc'.
- Camera Feed:** A live PTZ camera view of Kings Mills SR 741, showing heavy traffic and a police car with flashing lights in the foreground.



# Observations

AM Session (10:30am)



# Crossover (5:25pm)



# Lessons Learned

- Police Control should be coordinated
  - Start with Courseview then work out
- Changes in parking/circulation should be communicated (i.e. using overflow parking with shuttles)
- Test manual plungers- Be proactive with replacing
- Emailing ticket holders parking information/directions helped spread out traffic
- Be Flexible!



# Thank You!!

Steve Hartke  
City Engineer  
City of Mason

513-229-8520

[shartke@masonohorg](mailto:shartke@masonohorg)

Andrea Harth

Vice President of  
Operations

TEC Engineering, Inc.

513-701-9813

[aharth@teceng.com](mailto:aharth@teceng.com)