

WESTERN HILLS VIADUCT REPLACEMENT

Traffic Engineering Workshop #43

June 3, 2026

Brandon Lecrone, P.E.
Principal Engineer

WHV Project Manager
City of Cincinnati

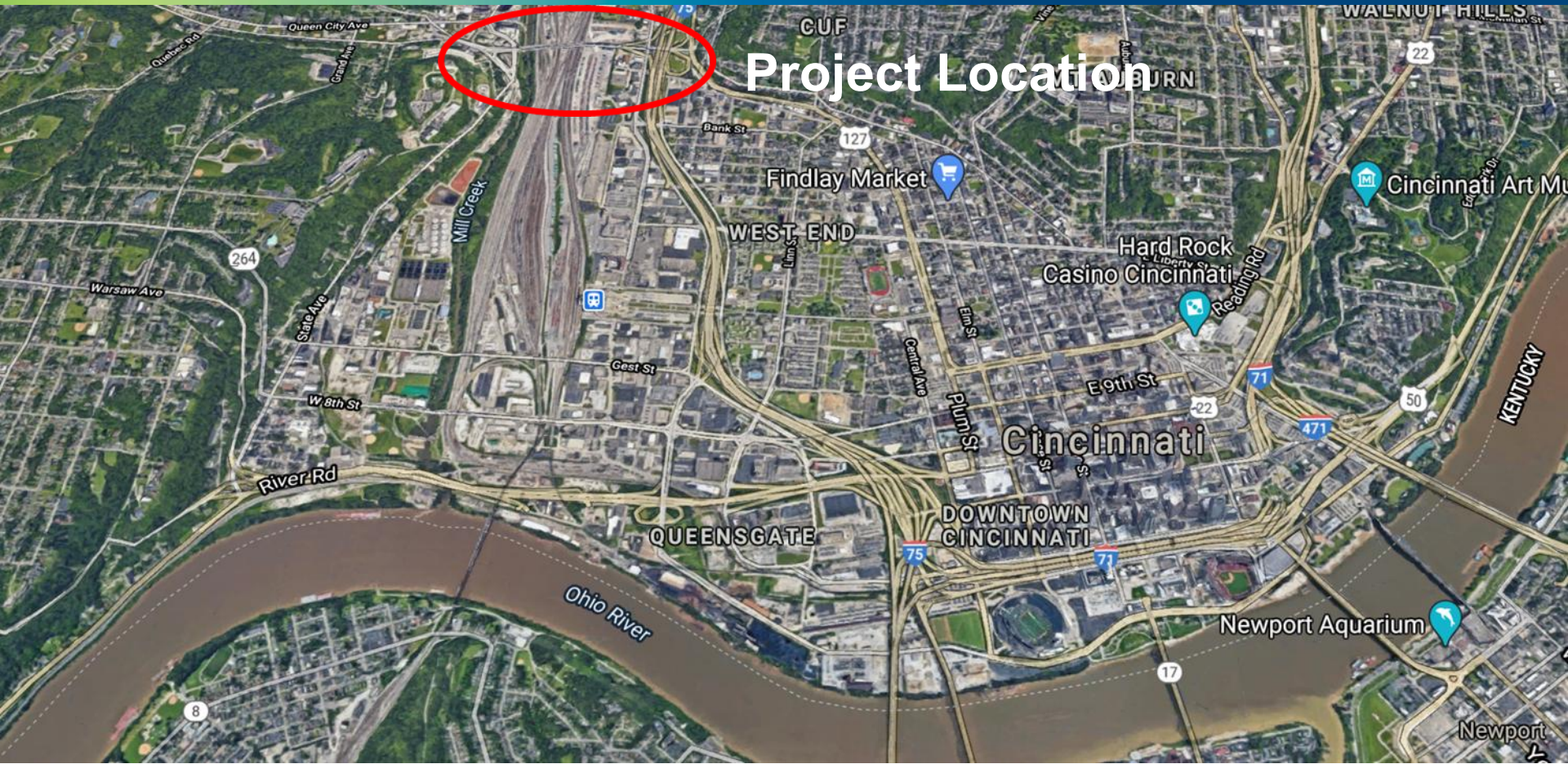


An aerial photograph of Cincinnati, Ohio, showing a multi-level highway interchange, a large industrial or rail yard with numerous shipping containers, and a cityscape in the background. The foreground features a road with a few cars and a grassy area. The text is overlaid in a semi-transparent blue box.

PROJECT SPONSORS

CITY OF CINCINNATI
and
HAMILTON COUNTY

Project Location



-
- The half-mile-long viaduct spans the Mill Creek Valley and Railroad Yards.
 - Connects Harrison and Westwood to Central Parkway and McMillan Street
 - Daily traffic over 55,000 vehicles per day



WESTERN HILLS
VIADUCT
REPLACEMENT PROJECT

CINCINNATI, OH

-
- Constructed in 1932, with major rehabilitation in 1977
 - Reaching the end of its design life
 - Structurally deficient and functionally obsolete
 - Posted Weight Limit



WESTERN HILLS
VIADUCT
REPLACEMENT PROJECT

CINCINNATI, OH

ODOT Partnership

I-75 Interchange

**THRU THE
VALLEY
PROJECT**
HAM-75-10:10

**MILL CREEK
EXPRESSWAY
PROJECT**
HAM-75-2.30

**WESTERN
HILLS
VIADUCT
PROJECT**
HAM-WHV

**BRENT
SPENCE
BRIDGE
PROJECT**
HAM-71/75-0.00-0.22

Cincinnati/
Northern
Kentucky
International...



Locomotive Wash Shed

Classification Yard

Fuel Storage Tanks

Intermodal Terminal



**MSDCG Valley Conveyance
Combined Sewer**

**Tie into
Harrison/Westwood**

**Lick Run
MSD
CSO #005**

**Queensgate CSX Hump
Classification Yard**

CSX Mainline Tracks

**Tie into
McMillan/
Central
Parkway**

**New South
I-75 Access**

**Duke Energy
High Voltage
Transmission Line**

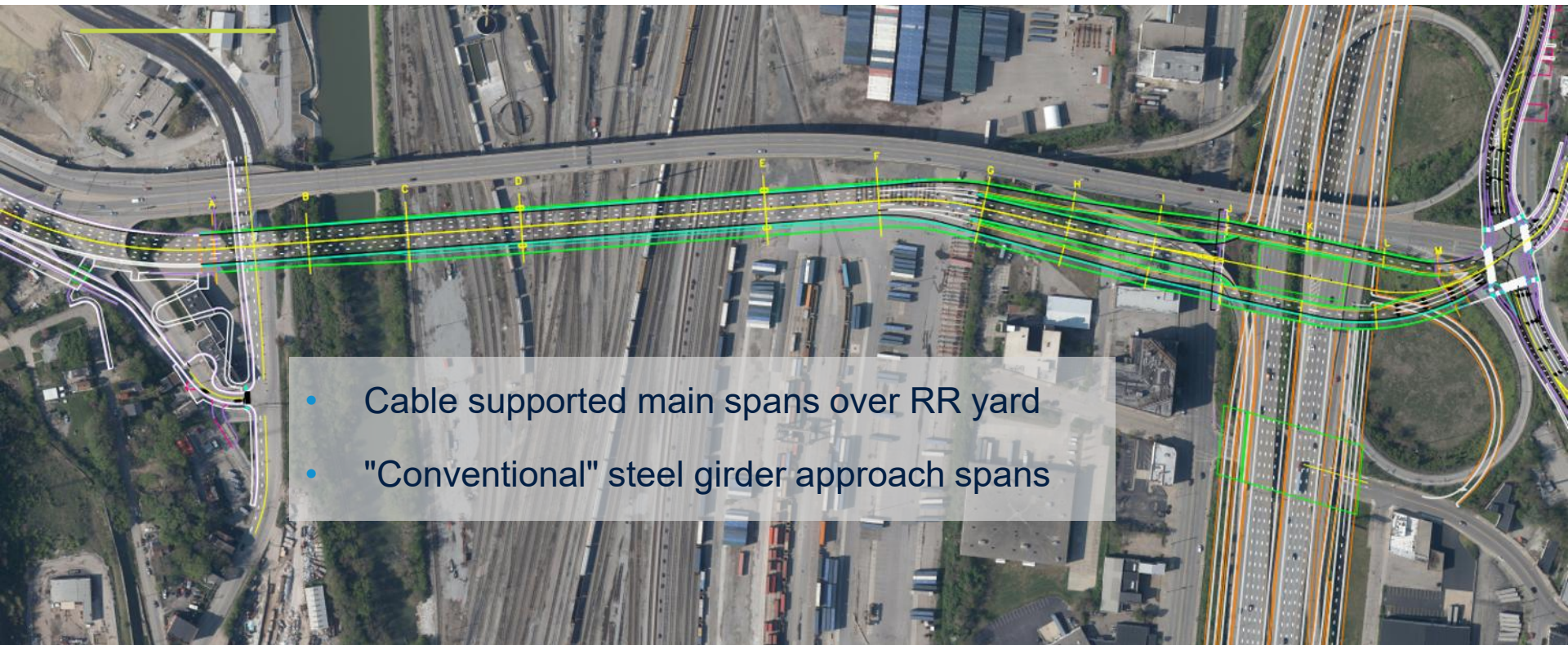
**CSX Intermodal
Loading Tracks**

**At-grade
Intersection
Spring
Grove Ave.**

- Legend:**
- MSDCG Valley Conveyance Systems
 - Duke Energy Electric
 - Constraints — I-75 Interchange
 - Constraints — CSX Loading
 - Constraints — Hills

**Western Hills Viaduct Preliminary Engineering Study
Design Constraints Map
September 2013**

Project Design



- Cable supported main spans over RR yard
- "Conventional" steel girder approach spans



Project Design

Cable supported main spans



Project Design

Three lanes each way



14-ft wide multi-use path on the south side



Project Design

West Approach Roadway

- Connections at Harrison/Westwood



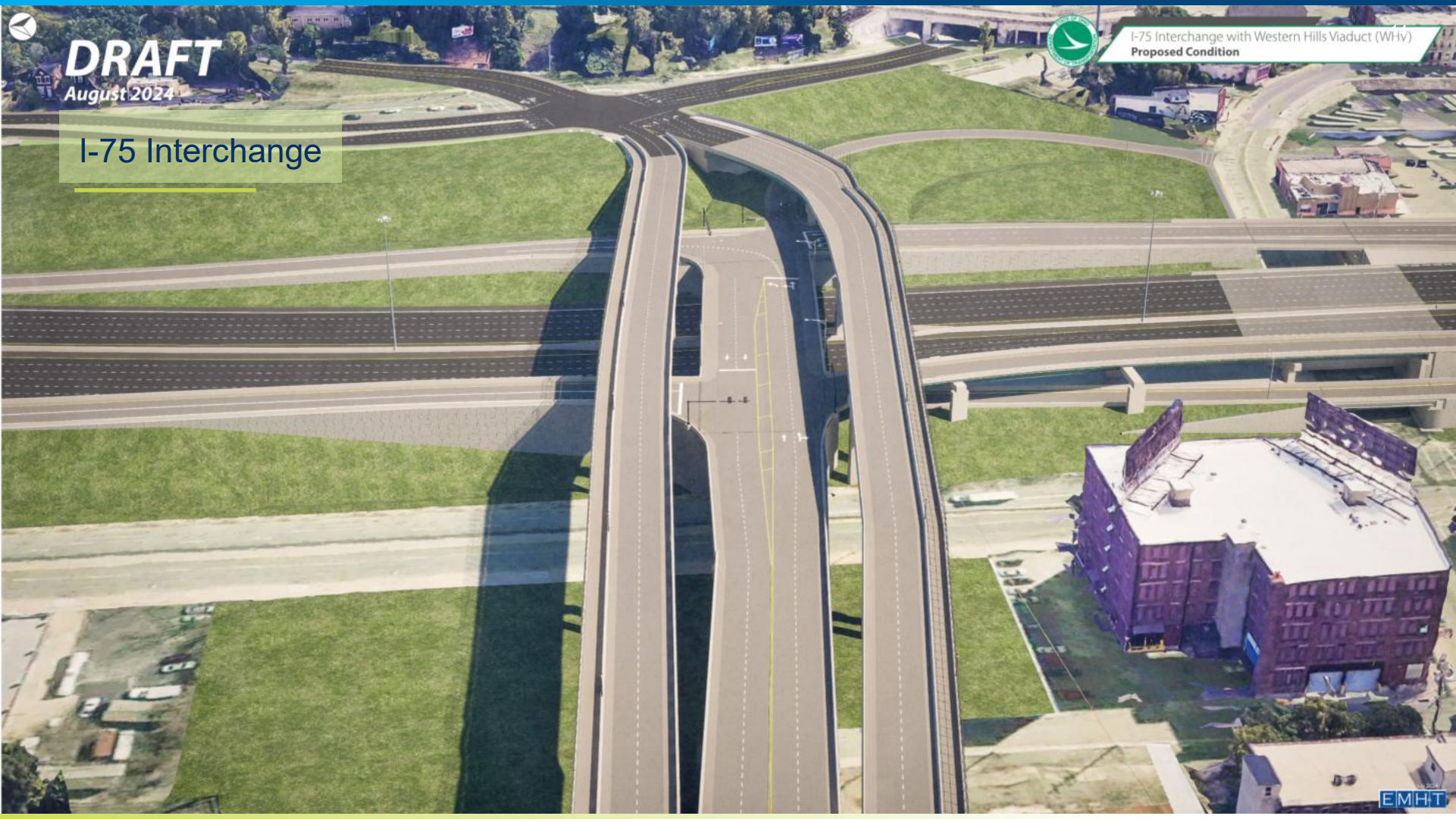


DRAFT
August 2024



I-75 Interchange with Western Hills Viaduct (WHV)
Proposed Condition

I-75 Interchange





DRAFT

August 2024

I-75 Interchange



I-75 Interchange with Western Hills Viaduct (WHV)
Proposed Condition

Western Hills Viaduct



2010 - 2012

2012 - 2017

2012 - 2018

2018 - 2026

2026 - 2033



- Define problem
- Assess existing and future conditions
- Identify stakeholders
- Determine scope

- Conduct field investigations
- Conduct feasibility study
- Identify preferred alternative

- Obtain public input
- Conduct detailed environmental analysis
- Complete environmental documentation

- Complete detailed design
- Obtain Public Input
- Finalize Right-of-Way including RR
- Agree on price and schedule with CMAR

- Construct new bridge
- Demolish existing viaduct

Western Hills Viaduct

Recent Accomplishments

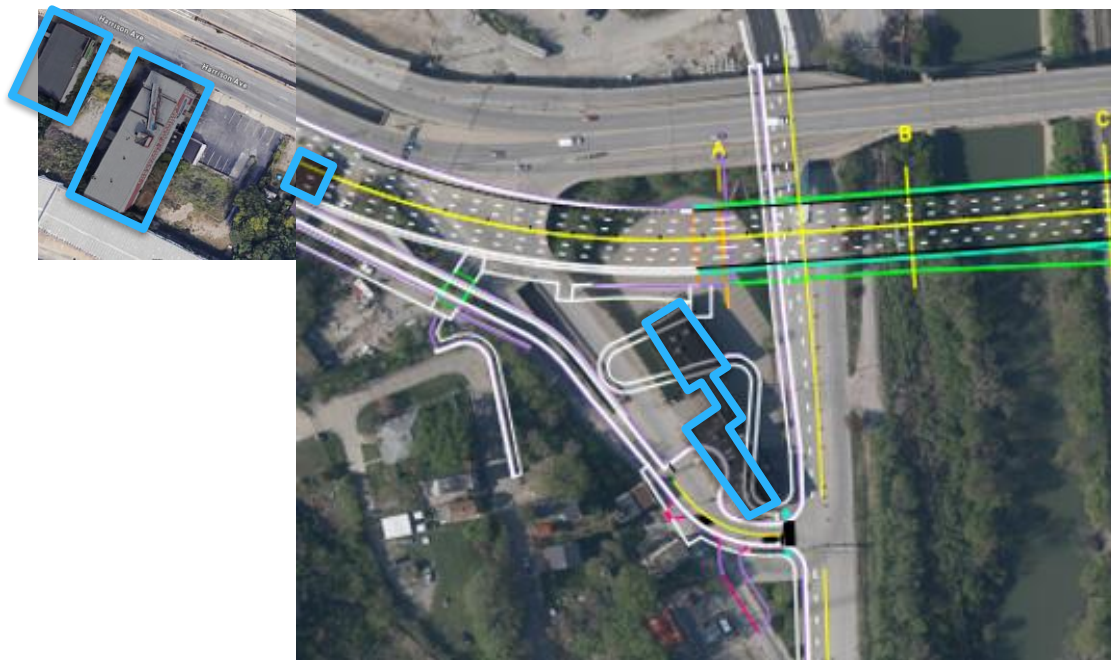
- Design
 - Track Relocation Design Complete
 - Stage 2 Design Underway
- Right-of-Way
 - Fee Title Acquisitions and Business Relocations Complete
 - Building Demolition - 5 of 6 Complete
- Utility Relocations
 - Duke Transmission Line Complete
- Construction
 - NTP for Early Work Package



WESTERN HILLS
VIADUCT
REPLACEMENT PROJECT

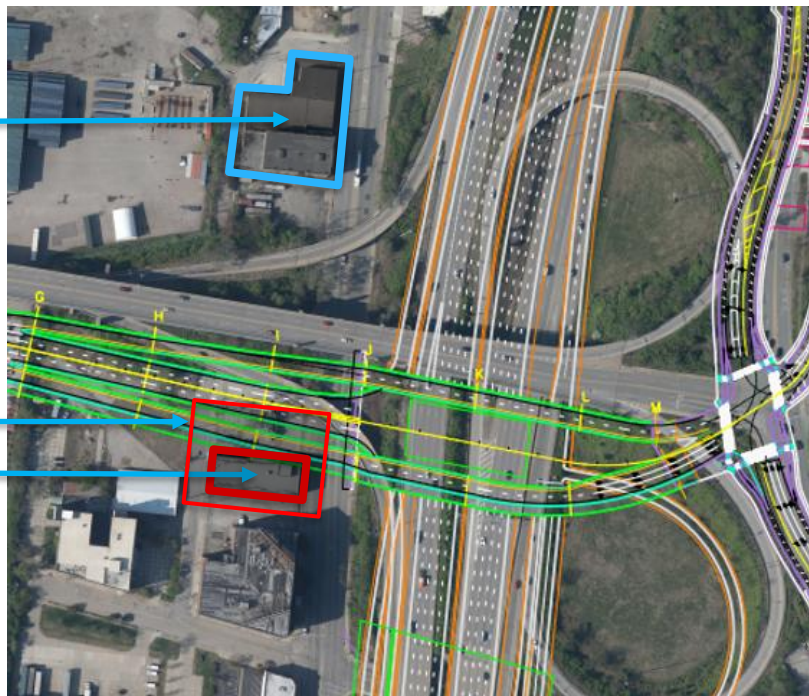
CINCINNATI, OH

Building Demolition – West



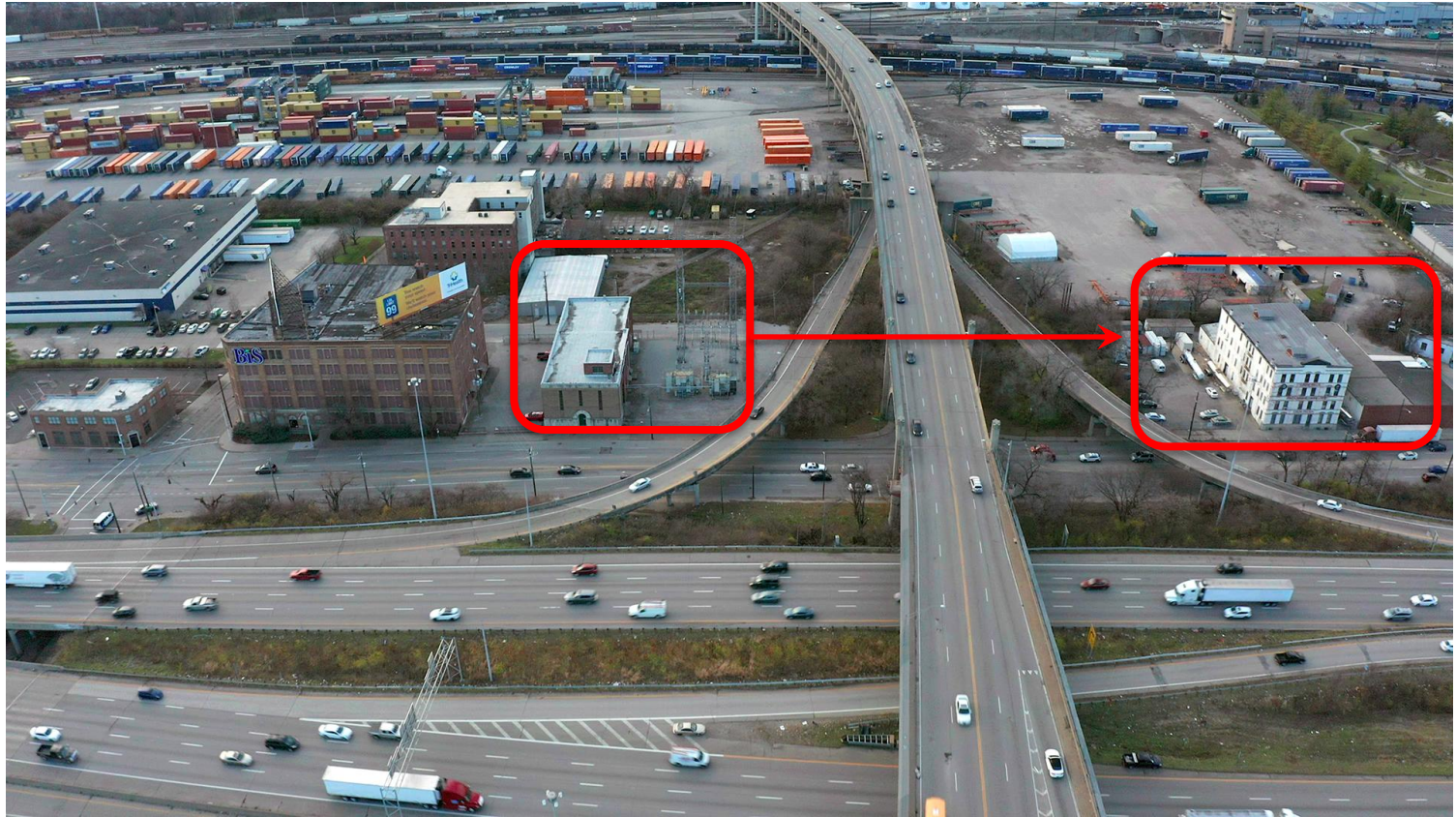
Building Demolition - East

ChemPack Building Demolition
& New Duke Substation



Old Duke Substation
Final Building to be Demolished

DUKE ENERGY RELOCATION



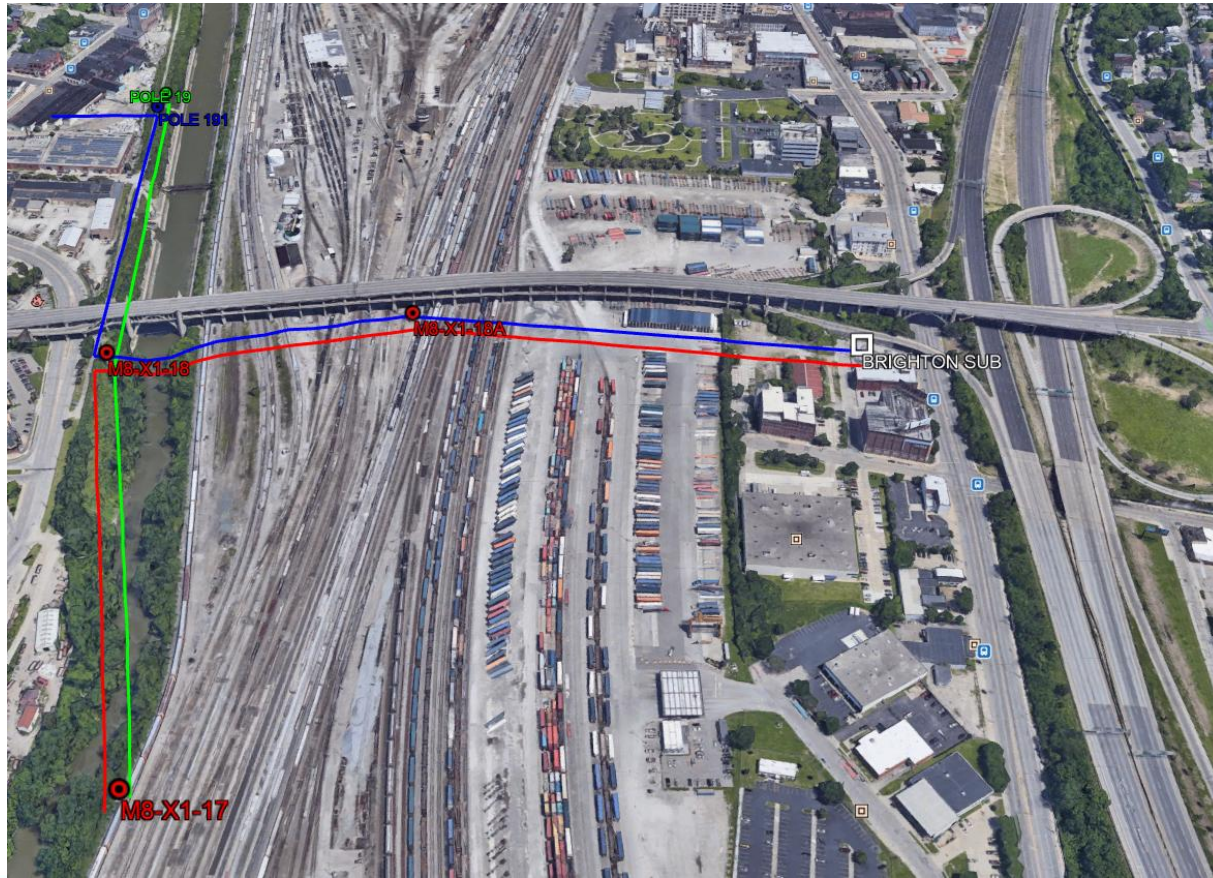
Duke Energy Relocation



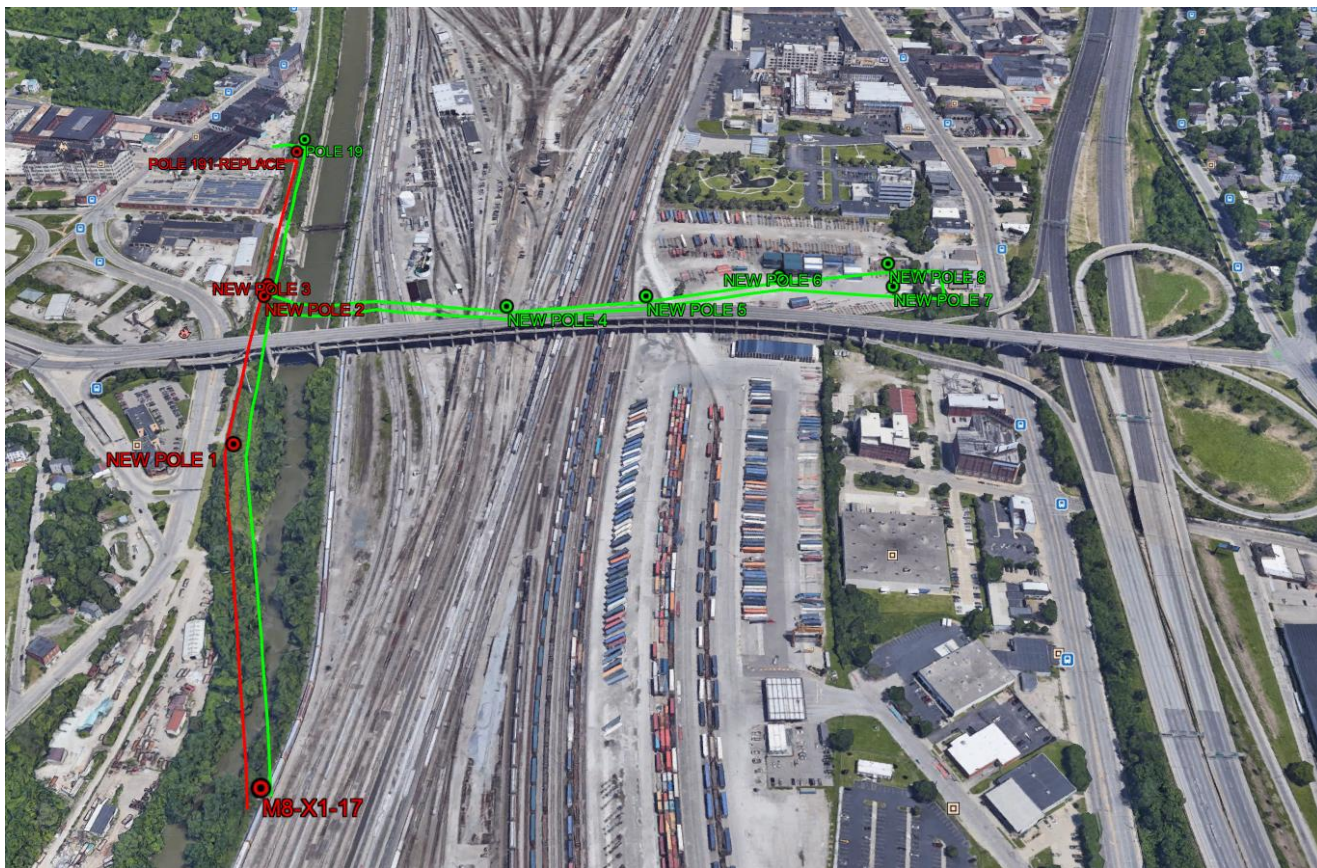
Duke Energy Relocation



EXISTING T-LINE ALIGNMENT



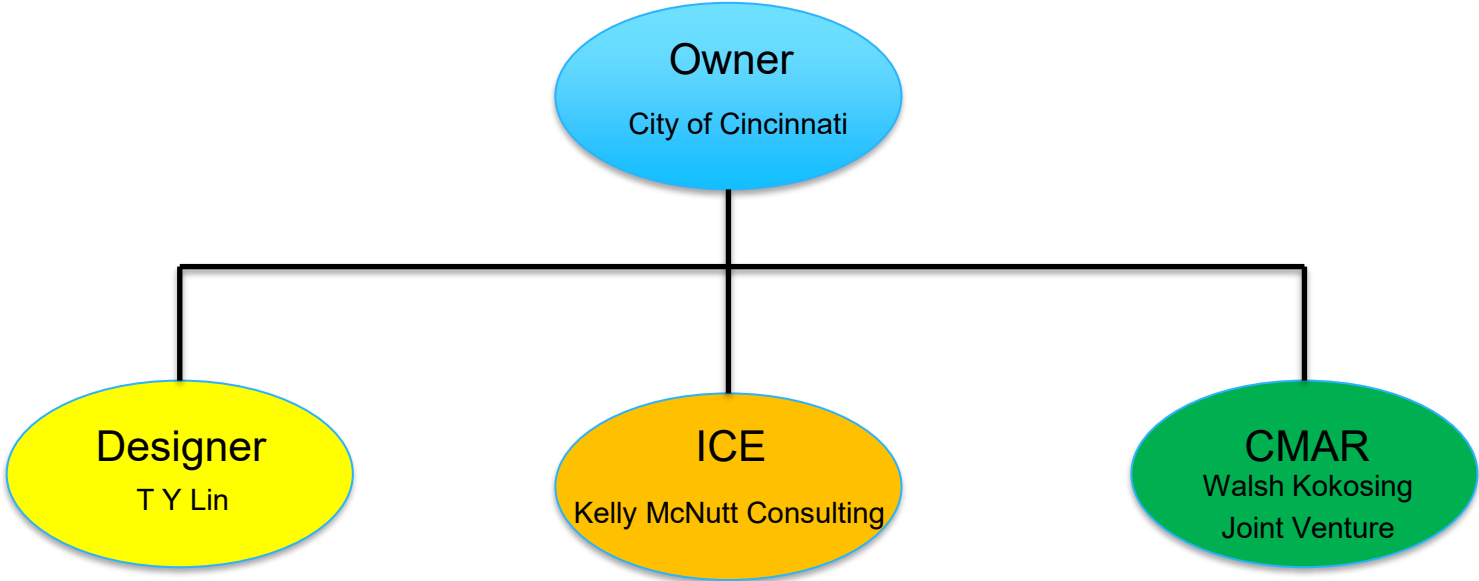
PROPOSED T-LINE ALIGNMENT



Duke Energy Relocation



Procurement Method – Construction Manager at Risk (CMAR)



Looking Ahead

- Three major phases

Phase 1: Early Work Package

Currently under contract

Phase 2: Remaining Bridge and Roadway Construction

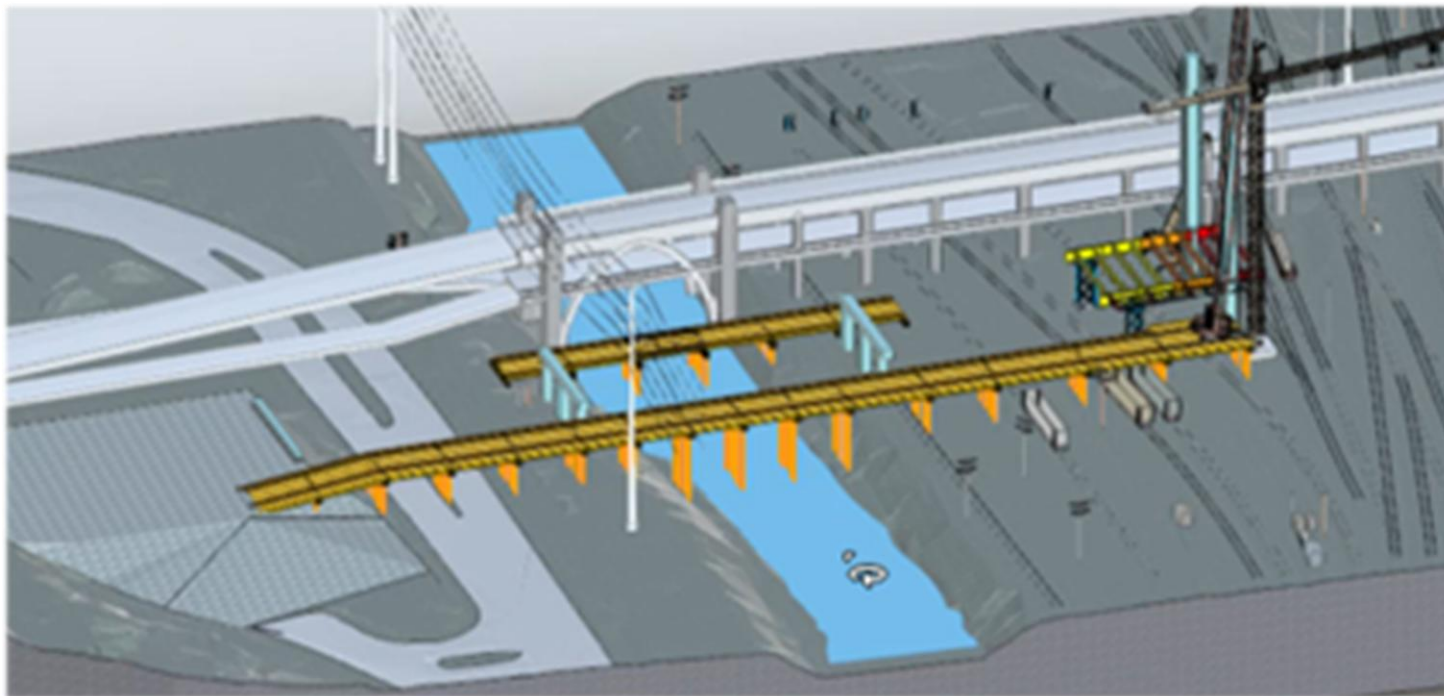
Likely broken into subphases

Phase 3: Demolition of Old Bridge

After new bridge is open to traffic



Phase 1

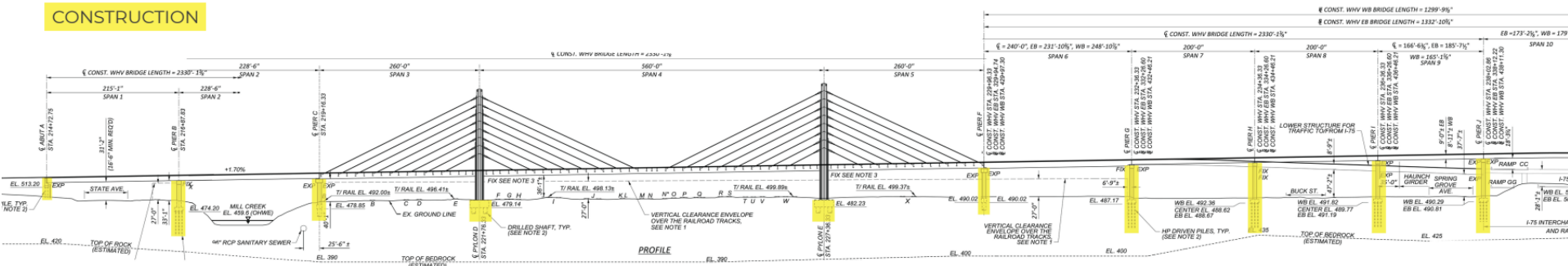


CURRENT CONSTRUCTION PHASE

- Relocate railroad track
- Construct access trestles

Phase 1

CONSTRUCTION

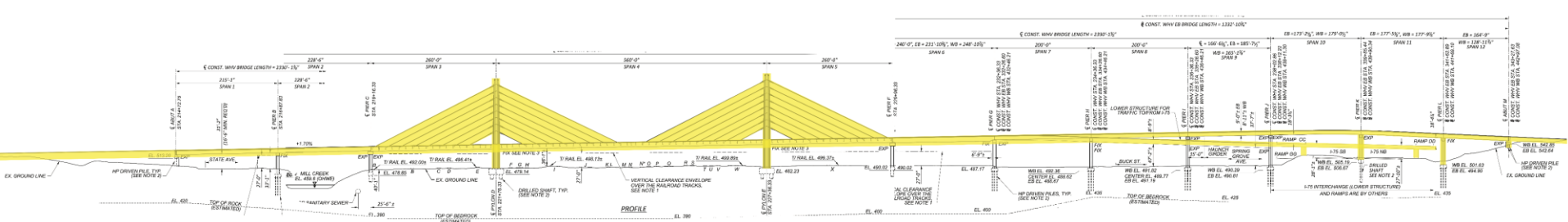


CONSTRUCTION WORK PACKAGE

- Construct foundations and footings for pylons
- Construct foundations and entire substructure for piers
- Relocate railroad track
- Construct access trestles

2026 - 2028

Phase 2



FUTURE CONSTRUCTION WORK

- Construct pylons and bridge superstructure
- Construct roadway and shared use path connections
- Construct interchange with I-75
- Open bridge to traffic

2028 - 2032

Phase 3



2032 - 2033

Project Website

 cincinnati-oh.gov/whv

Project Contact:

Brandon Lecrone, P.E.,
City of Cincinnati DOTE
WHV Project Manager
brandon.lecrone@cincinnati-oh.gov
(513) 352-6106

The City of Cincinnati's Department of Transportation & Engineering and its partners are following the requirements of the National Environmental Policy Act (NEPA) of 1969 for the Western Hills Viaduct replacement project. For details: www.cincinnati-oh.gov/WHV.